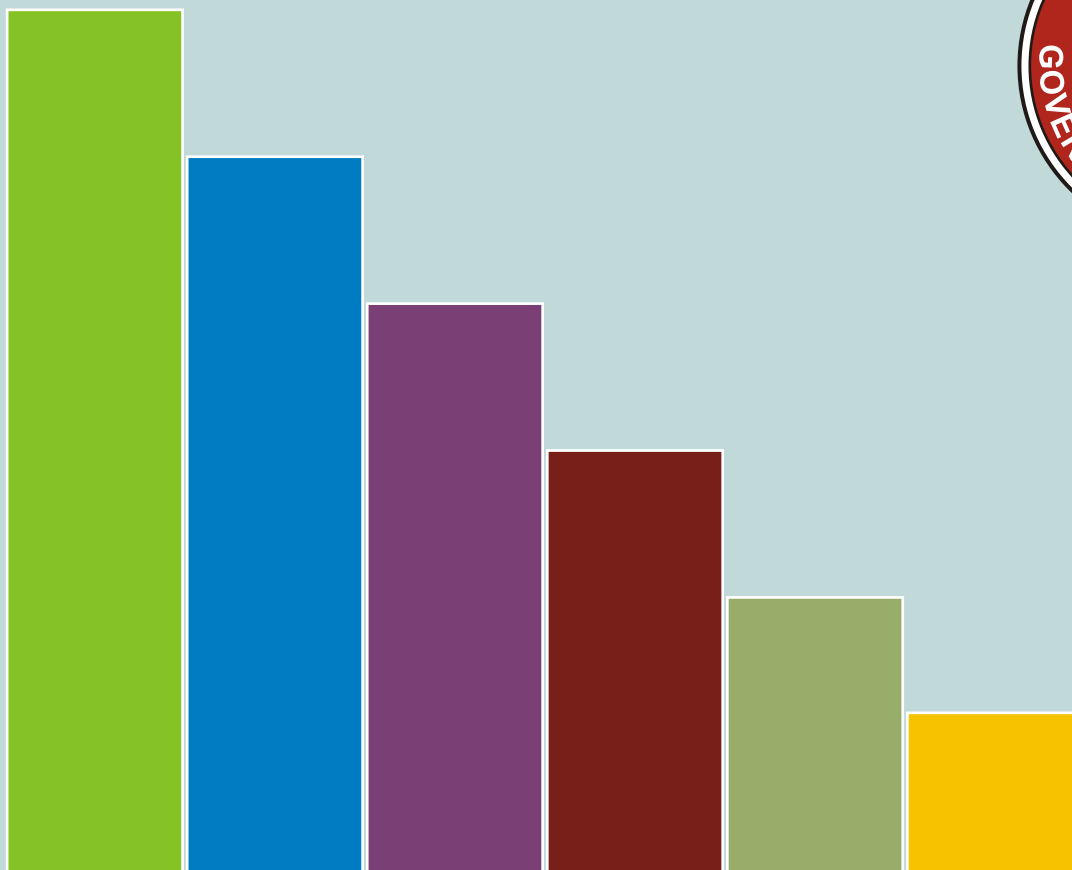


GOVERNMENT OF NAGALAND



Annual Administrative Report 2015-2016

**DEPARTMENT OF ECONOMICS & STATISTICS
NAGALAND : KOHIMA**



'Ensure Registration of Every Birth & Death'

CONTENTS

1. Cover	
2. Functions & Activities of the Department of Economics & Statistics 2015-2016	1
3. Organizational Chart of Des, Nagaland	2
4. Nagaland Gross State Domestic Product	3
5. Sectoral Composition of Gross State Value Added (GSVA)	4
6. Price Statistics & National Sample Survey	5
7. Registration of Birth & Deaths (vital statistics)	6
8. Index on Industrial Product (IIP) Statistical Handbook, Housing Statistics, Basic Statistics on Village Level Development (BSLLD)	7
9. Government Employees Census and Economic Survey Environmental Statistics and 6th Economics Statistics	8
10. 13th Finance Commission Grant	9
11. Local Bodies Accounts	10
12. Type Study on Horticulture Crops, NSS Pooling & other allied activities of the Department	11
13. Training Division, Monitoring Cell	12
14. Observance	13
15. Physical Achievement, Civil Works & Targets	14
16. Financial Statement & Construction	15

ANNUAL ADMINISTRATIVE REPORT OF THE DEPARTMENT OF ECONOMICS & STATISTICS 2015-2016

In 1964 a Statistical Branch with a nucleus staff headed by a Statistical Officer was established under the administrative and supervisory control of the Secretary to the Government of Nagaland, Planning and Co-ordination Department. Realising the need of credible data and information for formulation of policy and plans, the Government of Nagaland accorded sanction during May, 1969 for setting up of a separate Directorate of Economics and Statistics with its headquarter at Kohima.

Functions

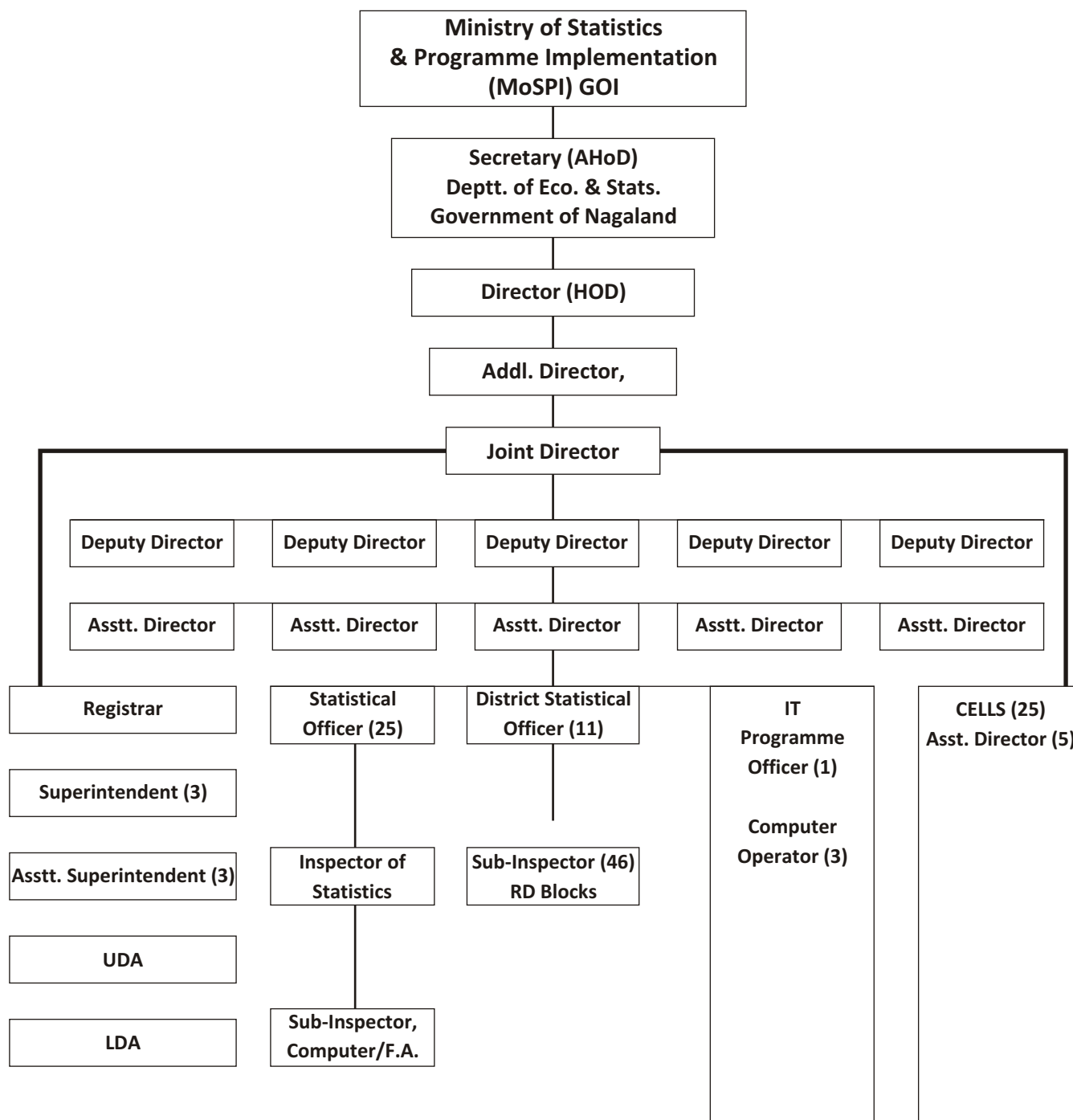
The Directorate of Economics & Statistics (DES) is the nodal agency for developing an efficient statistical system and ensuring technical coordination for all statistical activities in the State. It collects data, disseminates, conducts census and survey in coordination with various line Departments in the State. It liaises between the Ministry of Statistics & Programme Implementation (MoS&PI) and the State on issues pertaining to implementation of statistical activities and policies in the State. The Directorate of Economics & Statistics (DES) functions under the three tier system i.e. State level, District level and Block level. At the State level, the Directorate is the apex body for administrative control and for provision of technical guidance to all the statistical cells attached to the line Departments and District Statistical Offices. The Secretary to the Government of Nagaland, Department of Economics & Statistics is the administrative head and the Director heads the Directorate. The Director is assisted by one Additional Director, one Joint Director, five Deputy Directors, ten Assistant Directors, eleven District Statistical Officers, twenty five Statistical Officers and a host of technical and ministerial Staff.

The DES has Statistical Cells in 26 major Directorates in Kohima and Dimapur and has attached statistical personnel for effective data collection in coordination with user Departments. Similarly, Census and Surveys of National importance are carried out in coordination with the user Departments.

At the District level, the District Statistical Officer (DSO) is the head of the office. The DSO is the member secretary in the district level committees relating to statistical matters and is also the District Registrar of Births & Deaths.

With a view to evolve grass-root data collection, a Sub-Inspector of Statistics is posted in each of the 46 Rural Development Blocks to assist the Block Development Officers in data collection, compilation of various statistical reports including preparation of Village Directory.

ORGANIZATIONAL CHART OF DES, NAGALAND



The DES as a major Department has 564 manpower, comprising of the following grade.

1. Class I = 23
2. Class II = 40
3. Class III = 432
4. Grade IV = 69

Ensure Registration of Every Birth & Death'

Statistical Activities.

Most of the Department's activities are continuous in nature. The Department prepares and publishes estimation of State Domestic Product (SDP), National Sample Survey (NSS), Civil Registration System, Housing Statistics, Index on Industrial Product (IIP) Environmental Statistics, Gender Statistics, Disaster Statistics, Meteorology and publication of Statistical reports viz Handbook, Price Statistics, Economic Survey, Basic Statistics on Village Level Development Indicator (VLDI) Budget in brief, Atlas etc.

Nagaland Gross State Domestic Product.

The Directorate of Economics & Statistics estimates the Gross State Domestic Product of the State. In compliance with the instructions of Ministry of Statistics and Programme Implementation Government of India, the GSDP for the State has been revised from the old series of 2004-2005 to New Series 2011-2012 Price. The estimated figure of the GSDP both at current and constant in the new series is given in the **Table 1.1**

Table: 1.1:- Gross State Domestic Product at Market Price (2011-2012 Series)

YEAR	GSDP (Current Price) Rs in Lakhs	Growth Rate in percent	Per Capita Income (Current) In Rs	GSDP (Constant Price) Rs . in Lakhs	Growth Rate in percent	Per Capita Income (Constant) In Rs
2011-12	1183912		59463	1183912		59463
2012-13	1361877	15.05	67688	1244165	5.09	61837
2013-14 (P)	1605878	17.92	78952	1365596	9.76	67138
2014-15 (Q.E)	1772718	10.39	86264	1647791	7.26	71729
2015-16 (Adv.E)	2052415	15.78	98816	1591989	8.68	76648

P = Provisional, Q.E = Quick Estimate, Adv.E = Advanced Estimates.

The real growth of an economy which is measured by the GSDP at constant price, registered an increasing trend during 2011-2012 to 2015-2016. During 2014-2015 (Q.E) in real terms it recorded Rs.1647791 lakhs against Rs.1365596 lakhs in 2013-2014(P). The GSDP at constant price is further estimated to have increased to Rs.1591989 lakhs during 2015-16(Adv.E) with an annual growth rate of 8.68 percent, which is above the national average annual growth rate of 7.6 percent. The Per capita GSDP at constant prices is estimated at Rs.76648 in 2015-2016 (Adv. Estimates) as against Rs.71729 during 2014-2015 (Q.E). The annual growth rate of the Per Capita Income is estimated at 7.53 percent as against the national annual average growth of 6.2 percent.

During the same period the GSDP at current price increased from Rs.1772718 lakhs in 2014-2015(Q.E) to Rs.2052415 Lakhs during 2015-2016 (Adv) with annual growth rate of 15.78 percent over the previous year.

The Net State Domestic Product which is the value of product arrived at after deducting the value of Consumption of Fixed Capital (CFC) or depreciation charges is given in **Table 1.2**.

Ensure Registration of Every Birth & Death'

Table: 1.2:- Net State Domestic Product at Market Price (2011-2012 Series)

YEAR	NSDP (Current Price) Rs. in lakhs	Growth Rate in percent	Per Capita Income(Current) in Rs	NSDP (Constant Price) Rs in lakhs	Growth Rate in percent	Per Capita Income(Constant) in Rs
2011-12	1021666		51314	1021666		51314
2012-13	1181591	15.65	58727	1073677	5.09	53364
2013-14 (P)	1408771	19.23	69261	1188545	10.70	58434
2014-15 (Q.E)	1575747	11.85	76679	1287740	7.24	62664
2015-16 (Adv.E)	1844744	17.07	88818	1410278	9.52	67900

P = Provisional, Q.E = Quick Estimate, Adv.E = Advanced Estimates.

The NSDP at constant price is estimated at Rs. 1287740 lakhs during 2014-2015(Q.E) which increased to Rs.1410278 lakhs during 2015-2016 (Adv. E). The annual growth during the period was 9.52 percent. During the same period the Per Capita Income at NSDP (Constant Price) grew at a rate of 8.36 percent, i.e. from Rs.62664 in 2014-2015 (Q.E) to Rs.67900 during 2015-2016 (Adv.E). While Per Capita Income at NSDP (Current Price) increased from Rs. 76679/- in 2014-2015(Q.E) to Rs. 88818/- in 2015-2016(Adv.E) registering an annual growth rate of 15.83 percent.

Sectoral Composition of Gross State Value Added (GSVA) at Constant Price.

The GSVA comprises of three sectors, viz. Primary Sector, Secondary Sector and Tertiary Sector. Table 1.3 given below indicates the contribution made by each sector to the total Gross State Value Added (GSVA) at Constant Prices.

Table 1.3. Sectoral Composition of GSVA at Constant Price.

Sector	2011-12		2012-13		2013-14(P)		2014-15(Q.E)		2015-16(Adv.E)	
	Rs. in lakhs	Percent Share	Rs. in lakhs	Percent Share	Rs. in lakhs	Percent Share	Rs. in lakhs	Percent Share	Rs. in lakhs	Percent Share
Primary	979022	31.41	395963	31.04	446335	32.15	450530	30.28	485381	30.06
Secondary	149782	12.41	157395	12.34	186876	13.46	225811	15.18	262039	16.23
Tertiary	677849	56.18	7222392	56.62	754880	54.55	811692	54.55	867066	53.71
Total GSVA	1206653	100	1275751	100	1388091	100	1488033	100	1614486	100

P = Provisional, Q.E = Quick Estimate, Adv.E = Advanced Estimates.

The table indicates that the share contribution of the three sectors to the total GSVA remained almost the same during the last 5 years. The primary sector's contribution to the GSVA of the state hovered around 30 to 32 percent during the period. During the same period share of the secondary sector to the GSVA was about 12 percent to 16 percent. While the share of tertiary sector which was about 60 percent of the GSVA in the old series (2004-2005) declined to about 55 percent in the new series (2011-2012). Over the years there has been decline in the share of the primary sector in the GSVA. Whereas the share of the other two sectors have gone up which reflects the structural changes in the economy of the State from dependency on agriculture to moving towards a more industrial and service oriented economy.

Figure 1.1

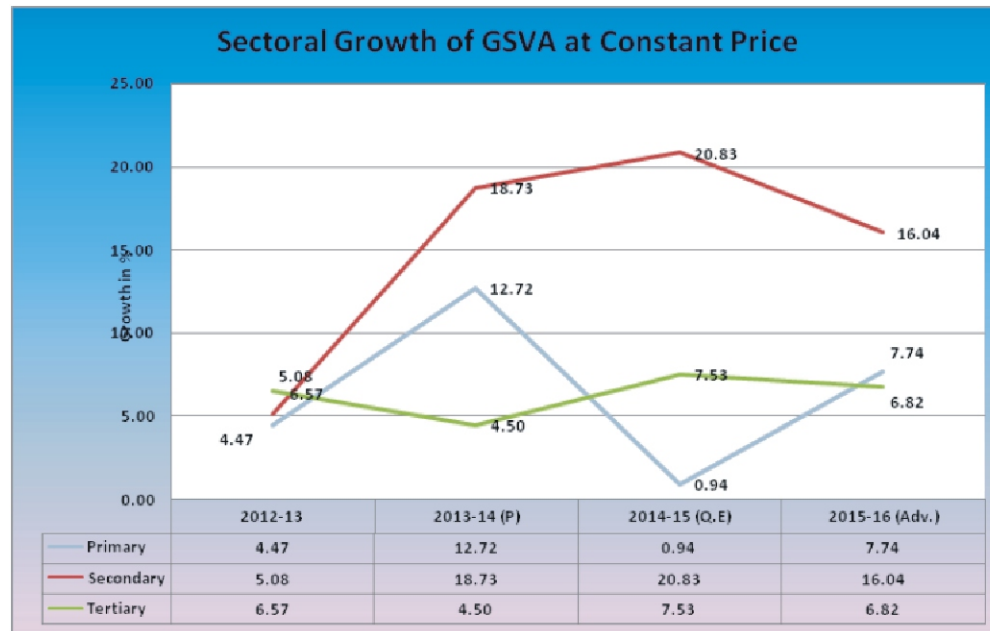


Figure 1.1 graphically represents the growth trend of the three broad sectors of the economy during 2011-2012 to 2015-2016 (Adv.E). The growth rate of the primary sector showed a marginal increase of 0.94 percent in 2014-2015 but recovered in 2015-2016(Adv. E) with a growth rate of 7.74 percent. However, secondary and tertiary sector showed a downward growth trend during the same period.

Price Statistics.

The Directorate of Economics & Statistics publishes the Quarterly & Annual Price Bulletin on a regular basis. This bulletin contains analysis of the relative movement of retail prices in 11 districts and wholesale price data from Dimapur. The DES constructs Consumer Price Index (CPI) for Urban Manual Employees (UNME) using 1981-82= 100 as base year. Consumer Price Index (CPI) is a useful tool for generating and measuring real wage & salary, taxation and price policy. It also indicates real income and purchasing power of money.

National Sample Survey (NSS)

The Directorate of Economics & Statistics, Nagaland along with the rest of the country has been participating in the conduct of National Sample Survey (NSS) since 1972. This informed database serves as a major source of information for formulating comprehensive planning in the country. The District Statistical Offices canvass the survey schedules and submits to the Directorate for scrutiny, data entry, validation, tabulation, generation of tables and for publication of reports.

The State and Central sample of the 68th NSS round have been pooled in to bring out more accurate and reliable disaggregated data. During 2015-2016, the Department released the report of NSS 68th Round (July 2011-June 2012) on '*Employment and Unemployment Situation in Nagaland*'. This survey was spread across 208 sample units consisting of 88 rural and 120 urban blocks covering 1664 households with 704 rural households and 960 urban households.

Ensure Registration of Every Birth & Death'

The survey reported that per 1000 distribution of households, the principal industry of about 54.7 percent of the rural population is engaged or employed in agriculture and about 4 percent of urban population is engaged in agriculture. Conversely, in the urban areas, 65.5 percent of the population is employed in other service sector. This indicates that the rural population of the State is predominately dependent on agriculture whereas the urban population is dependent on service sector for employment.

Registration of Births & Deaths (Vital Statistics).

Civil registration of Births & Deaths are integrated information system that generates primarily legal, administrative and statistical information which benefits individual households, communities, government institutions and non-governmental organizations engaged in various socio-economic and other human development activities. Vital statistics generated through registration of births and deaths is the primary data which continuously monitor the number of births and deaths taking place in the State at certain point of time.

The Registration of Births and Deaths Act 1969 was enacted and enforced in the country. The Nagaland Registration of Births and Deaths Rules 1972 was framed under this Act and was subsequently amended by the Model Registration of Births and Deaths Rules 1999 to facilitate the execution of the registration of Births and Deaths Act 1969. The Directorate of Economics & Statistics has been functioning as the nodal Department for implementation of Registration of Births and Deaths Act in the State. Currently, the DES, has brought out Annual Report of Births & Deaths for the year 2010-2014

A comparative statement of Births and Deaths registered in rural and urban areas in the State during the last 4 (four) years are indicated as below:-

Sl. No.	Year	Area	No. of Births Registered	No. of Deaths Registered
1	2010	Rural	25463	3772
		Urban	19806	3772
		Total	45269	6836
2	2011	Rural	25663	3832
		Urban	20006	3124
		Total	45669	6956
3	2012	Rural	25692	3902
		Urban	20036	3191
		Total	45728	7093
4	2013	Rural	25732	3927
		Urban	20058	3225
		Total	45790	7152
5	2014	Rural	37602	1052
		Urban	21348	923
		Total	58950	1975

On a pilot basis online registration of births and deaths has been introduced in Kohima district and can be accessed through the State Portal. This facility will be extended to all the districts in a phased manner in collaboration with the IT Department.



Smti. Kevileno Angami, Secretary to the Government of Nagaland, Economics & Statistic Department addressing District Coordination meeting on Civil Registration System at DES Hq.

Index on Industrial Production (IIP).

The Index of Industrial Production measures the volume of change in the industrial production in the economy. It is an important indicator for the Government to formulate economic policies pertaining to the industrial sector of the economy. This Index reflects the trends in the growth and performance of the industrial sector. DES Nagaland compiles the State level Indices of Industrial Production (IIP) with base year 2004-2005. This base is under revision to 2011-2012. On completion of the revision exercise DES will be releasing the IIP index based on the new base year.

Statistical Handbook.

Statistical Handbook is one of the major publications of the Department. This publication is a reflection of the developmental activities being carried out by various Departments in the State. The data collected from various departments and agencies are disseminated through the Hand Book. These data also available in public domain through the website of the Department. The Department has published Statistical Handbook 2014. The Statistical Handbook 2015 is currently under finalization for publication.

Housing Statistics.

On the advice of the Ministry of Housing & Poverty Alleviation (NBO), the nodal organization at the Centre to develop a robust, authentic and timely transaction of housing data, the Directorate of Economics and Statistics has started collecting data on Housing and Building Construction and also to construct Housing Start Up Index (HSUI) from 3 (three) districts of Nagaland namely Kohima, Dimapur and Tuensang.

Consultative meeting with district administration was held and training was imparted to officials in the three districts for effective collection of housing and construction statistics in the private sector. The collected information from the three districts has been transmitted to the Ministry through BRIKS MIS reporting software.

Basic Statistics on Village Level Development (BSLLD).

Under the directive of the Ministry of Statistics & Programme Implementation (Social Statistics Division), Central Statistical Office, GOI, the Directorate of Economics Statistics Nagaland carried out the second phase of pilot study on Local Level Development (BSLLD).

Ensure Registration of Every Birth & Death'

Government Employees Census.

The Directorate of Economics & Statistics (DES) collects and compiles information on the total number of government employees from every Department in the State and annually publishes report. The Department has published the Government Employees Census 2014(Provisional) with a total No. of 95903 employees, comprising of 3988 Class-I Gazette, 2740 Class-II Gazette, 64019 Class-III and 25156 Class-IV respectively.

Economic Survey.

Economic Survey Report is an important document containing an overview of the status of the State's economy. It summarises the performance of the major developmental programmes and highlights the policy initiatives of the Government. It examines the trends in the fiscal policy, demography and socio-economic development of the State. In line with the practice adopted in the rest of the country, the Department placed the first Economic Survey 2014-2015 of the floor of the Nagaland Legislative Assembly in 2015. The Economic Survey 2015-16 will be placed in the august house during the Budget Session in March 2016.

Environmental Statistics.

The Department of Economics & Statistics Nagaland has set up an Environmental Statistics Cell. This Cell will collect data on environmental degradation, pollution and climate change in the State in coordination with Environment Cell of Forest Department and Pollution Control Board, Government of Nagaland.

Sixth Economic Census (6th EC).

The Sixth Economic Census is conducted on All India basis covering all the States and UTs in the country. The Economic Census is known to be one of the most complex and massive administrative exercises in which all establishments whether households or non-households, big or small, in the Private or Public sector are enumerated.

The Census provides up-to-date information on operation and other characteristics, viz., number of establishments, number of persons employed, source of finance, type of ownership, religion code and social group of proprietors of establishments.

The field enumeration, tabulation, scanning and data entry for the 6th Economic Census was completed during 2014-2015. The Provisional Results of the Census was released in 2015. The table below gives the summary detail of establishment captured during the Census.

District wise total number of establishments for all broad activity by sector and type of establishment in Nagaland. (Provisional)										
		Number of Establishments								
		Rural			Urban			Combined		
		Type of establishment			Type of establishment			Type of establishment		
		Without Hired Worker	With at least one Hired Worker	Total	Without Hired Worker	With at least one Hired Worker	Total	Without Hired Worker	With at least one Hired Worker	Total
D i s t r i c t	01 - Mon	4501	1551	6052	925	552	1477	5426	2103	7529
	02 - Mokokchung	1514	929	2443	2074	948	3022	3588	1877	5465
	03 - Zunheboto	1163	800	1963	663	290	953	1826	1090	2916
	04 - Wokha	1793	952	2745	890	756	1646	2683	1708	4391
	05 - Dimapur	3243	1862	5105	4550	5671	10221	7793	7533	15326
	06 - Phek	1575	932	2507	661	185	846	2236	1117	3353
	07 - Tuensang	1606	659	2265	707	405	1112	2313	1064	3377
	08 - Longleng	2582	329	2911	429	164	593	3011	493	3504
	09 - Kiphire	182	376	558	264	79	343	446	455	901
	10 - Kohima	3293	1017	4310	4440	2058	6498	7733	3075	10808
	11 - Peren	2099	488	2587	578	202	780	2677	690	3367
	Total	23551	9895	33446	16181	11310	27491	39732	21205	60937

Ensure Registration of Every Birth & Death'

A total of 60937 establishments were recorded during 6th Economic Census. Out of the total 60937 establishment, Dimapur recorded the highest number of establishments with 15326 followed by Kohima 10808. Kiphire district had the least number of establishments. The final result will be published during 2016-2017 after scrutiny and finalization of the provisional figures.

Thirteen Finance Commission Grant 2011-2015.

The Department received Rs.8.8 crore under the 13th Finance Commission Grant. The activities under this grant were (1) Preparation District Business Register (2) Local Bodies Account (3) Farm Activity identifying 10 major crops (4) Pooling of NSS State and Central Sample Data. (5) Network connectivity in the districts (6) Strengthening of Headquarter.

The above specified activities were completed during 2015-2016. The end results of some of these activities are summarized as below.

1. **District Business Register:** - Business Register requires listing of all establishments pursuing various economic activities relating to production and distribution of goods and or services at a place. Business Register provides information on total employment, number of traders, enterprise groups/enterprises and their local offices etc. It serves as a statistical tool for the preparation and coordination of surveys. Nagaland recorded 26457 establishments spread across the districts under Eight Registering Authorities. The district wise establishment registered under Business Register is given in the table below.

Distribution of Establishment listed under District Business Register

1	Kohima	5911	7	Phek	1927
2	Mokokchung	2684	8	Peren	821
3	Tuensang	2085	9	Longleng	445
4	Wokha	2546	10	Kiphire	632
5	Zunheboto	1370	11	Dimapur	6911
6	Mon	1125		Total	26457



District Coordination Meeting on Business Register with the Participating Department in Mokokchung

Ensure Registration of Every Birth & Death'

2. **Local Bodies Account:-** The survey of Local Bodies of Nagaland was under taken by the Department of Economics and Statistics under the Thirteen Finance Commission Grant to assess the contribution of Local Bodies towards State Domestic Product, Capital Formation and also to find out the sources of Receipts of the Local Bodies. Another objective of the exercise was splitting the expenses of Local Bodies Accounts into Economics- cum- Purpose Classification to enable a meaningful analysis of the accounts of the Local Bodies.

Out of the 1163 Local Bodies in Nagaland, 1080 Local Bodies (i.e, 93%) were surveyed by the enumerators due to inaccessibility of the villages and non availability of accounts. District wise, percentage of Local Bodies surveyed by the enumerator are: Wokha (100%), Mokokchung (98%), Mon (98%), Tuensang (98%), Dimapur (96%), Zunheboto (95%), Phek (94%), Longleng (91%), Kiphire (87%), Kohima (83%), Peren (69%).

An analysis of the receipts of Village Local Bodies reveal that almost 95 percent of the income of these local bodies were grants and transfer from the Government programmes like Mahatma Gandhi National Rural Employment Guarantee Schemes (MGNREGS), Sarva Shiksha Abhiyan (SSA), National Rural Health Mission (NRHM), Pradhan Mantri Gram Sadak Yojana (PMGSY), Backward Region Grant Fund (BRGF) etc.

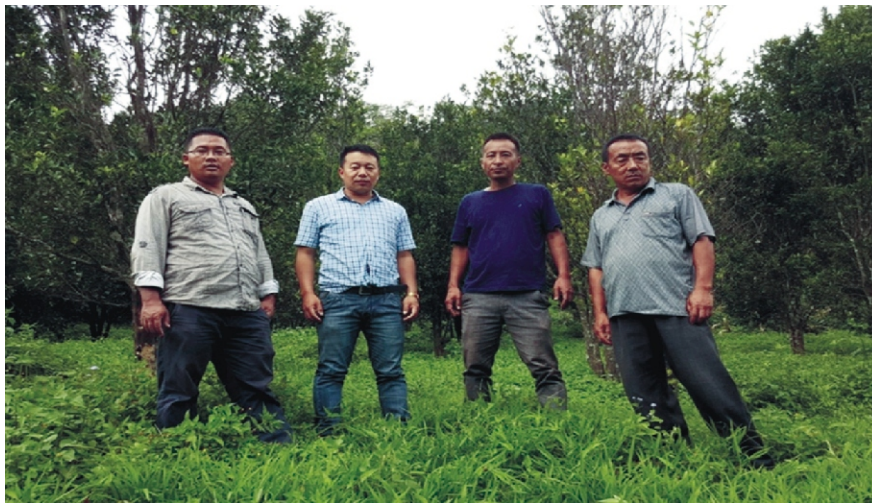
The local bodies of Nagaland as a whole contributed an amount of Rs.12,49,76,183 in 2010-2011, Rs.13,62,31,915 in 2011-2012 and Rs.11,65,74,008 in 2012-2013 towards State Domestic Product (SDP) from the administration of Local Bodies alone. In term of the Gross Capital Formation, the year wise contribution of the local bodies amount to Rs.105,74,47,915 in 2010-2011, Rs.103,35,35,390 in 2011-2012 and Rs.88,05,19,056 in 2012-2013. The report on the local bodies account has been analysed and published .



Directorate and DSO, officials inspecting & collecting information from the VDB at Lakhuti Village, Wokha district.

Ensure Registration of Every Birth & Death'

3. **Type Study on Horticulture Crops.** A survey on major fruit crops in Nagaland was conducted under the Thirteen Finance Commission Grant in collaboration with School of Agricultural Science and Rural Development, Nagaland University, Medziphema Campus. The report of the survey has been published during 2015-2016. Some of the major findings of the survey are:-
- 81.86 percent of the selected sample were engaged in farming and only 18.14 percent were practicing other occupation.
 - 37.45 percent preferred mixed farming and the remaining 62.65 percent went for single crop farming indicating single crop pattern of plantation/cultivation more prominent in the State.
 - 56.26 percent reported hiring of labour force whereas 43.74 percent did not hire any labour force.
 - 67.49 percent sold their product directly from the field, 18.48 percent sold their product directly in the market, 10.28 percent sold to whole sellers and only 3.7 percent sold through contract selling.



Survey team at orange orchard

4. **NSS Pooling:-** Under the Thirteen Finance Commission Grant, the Department of Economics & Statistics pooled the State data and Central data for the NSS 66th Round '*Household Consumer Expenditure*'. The methodology used for pooling the data was provided by the (DPD) NSSO, MOSPI, GOI as recommended by the National Statistical Commission (NSC). This report was published during 2015-2016.

Other Allied Activities of the Department

Computer Cell.

The main activities of the section are:

- Maintenance of website- quarterly / yearly, update, storage and dissemination of statistical data.
- Conduct of training on computer application for processing statistical data.
- Repair and maintenance of computer hardware/networking.
- Maintenance of data warehouse.
- Department website: www.statistics.nagaland.gov.in

Ensure Registration of Every Birth & Death'

Capacity Building.

As the nodal agency for statistical activities in the State it is essential for statistical personnel to acquire and update their proficiency in statistical techniques and methodologies constantly. With this in mind a number of officers and staff were deputed to various in-service training programmes conducted by the Ministry of Statistics & Programme Implementation (MoSPI), e.g on Sample Survey and Index Number and Price Statistics at National Statistical Systems Academy (NSSTA), Greater Noida.

The Training Division, DES.

A training division in the Directorate has been established to develop and formulate need based training modules for enhancing human resource capacity of the Department. As part of strengthening the statistical system in the State, the training division conducted in-service training for officers and staff of the Directorate and the District Statistical Officers on official statistics, basic computer application etc. Sensitisation and Orientation programmes were also conducted for all the grass root and institutional Registrars of births and deaths.



Director Addressing trainees, DES Hq.

Monitoring Cell.

A monitoring cell has been set up in the Directorate to monitor, validate report and authenticate data generated by line Departments. It renders technical guidance to line Departments in data collection. The cell conducts quarterly coordination meeting to review the performance of Statistical personnel attached to line Departments.

Ensure Registration of Every Birth & Death'

Observance of Statistics Day 2015

The DES, Nagaland along with the rest of the country observed National Statistics Day on 29th June, 2015 under the theme “*Environmental Impact on Socio-Economic Development*” with Shri R. Tohanba, the Hon'ble Parliamentary Secretary for Economics & Statistics and Municipal Affairs as the Chief Guest. Shri Amba Jamir, the Executive Director, Sustainable Development Forum Nagaland (SDFN) was the theme speaker.



Shri. R Tohanba, Hon'ble Parliamentary Secretary for Economics & Statistics and Municipal Affairs addressing the gathering on National Statistics Day



Shri. Amba Jamir, Executive Director SDFN Speaking on National Statistics Day



Smti. Kevileno Angami, Secretary to the Government of Nagaland, Dept. of Economics & Statistics addressing the gathering on National Statistics Day



Shri. Y. Sacheo Ovung, Director, addressing the gathering on National Statistics Day

Ensure Registration of Every Birth & Death'

Physical Achievements During 2015-2016

Publication.

1. Statistical Handbook 2014
2. Estimation of State Domestic Product 2011-2012 (New Series)
3. National Sample Survey (NSS) 67th Round and 68th Round
3. Annual Price Bulletin 2014
4. Important Economic Indicators 2013
5. Statistical Abstract 2008-2009
6. Government Employees Census 2014
8. Economic Survey 2014-2015
9. Election Result Seventh Edition 2013
11. Annual Report of Births & Deaths 2014
13. Basic Statistics for Local Level Development (BSLLD) Rural Areas report.

Civil Works.

During 2015-2016, the Department has completed one 3 storey building flat type staff quarter at Dimapur while construction of new Directorate office building and Director's official residence are on the verge of completion.

Targets.

- a) **Implementation of Support for Statistical System (SSS):-**The DES, Nagaland is one of the intending participants in the project Support for Statistical System (SSS) funded by MoSPI, GoI, to strengthen the existing State Statistical System. The programme will focus on the 20 key statistical activities to strengthen the statistical system in the State. The State Government has already signed the Memorandum of Understanding (MoU) with the MOSPI, GOI for the implementation of the programme.
- b) **Cadre Review:** To rationalize staffing pattern in the Department and for improving State Statistical System, Cadre Review will be taken up.
- c) **Construction of Staff Quarter:** The Department proposes to undertake construction of staff quarters in all the districts in a phased manner.
- d) **Effective implementation of CRS:-** Cent percent registration of births and deaths by 2020 is targeted as envisaged by the National Population Policy.

Financial Statement.

The budget outlay of the Department during 2015-2016 under the Head of Account "3454" is given below.

Budget allocation of the Department for the year 2015-2016. (Rs. in lakh)

Year	Plan (Rs.in lakh)	Non-Plan (Rs.in lakh)	Total (Rs. in lakh)
2014-15	322.00	2558.00	2880.00
2015-16	150.00	2548.32	2698.32

Construction:

Detail Head-Wise Break-up of State Plan to be incorporated in the Budget Estimates, 2015-16

Sl No.	Major/sub-Major & Detail Heads	Expenditure incurred upto the end of 2015-16
1	2	3
STATE PLAN (SP)		
Rs. in Lakh		
1	Construction of Additional Floor at New Directorate Building Kohima, ongoing (under HUDCO negotiated loan)	50.00
DIMAPUR		
2	Construction of 1 No. of 3 (three) storey flat type quarter at Chumukedima, Dimapur (ongoing)	15.00
LONGLENG		
3	Construction of unfinished work under State Plan attached to District Statistical Office building with approach road, retaining wall and security fencing at Longleng completion, ongoing (ongoing)	5.00
MOKOKCHUNG		
4	Repair & Renovation of staff quarters, New	25.00
PEREN		
5	Construction of DSO building at Peren, (ongoing)	5.00
KOHIMA		
6	Construction of retaining wall, drainage, drainage, security fencing and gate at new Director's residence at Kohima (ongoing)	5.00
7	Construction of approach road with black topping, retaining wall from Land Resources Directorate to Y Junction at new Directorate office building, (ongoing).	5.00
8	Construction of approach road, culvert, retaining wall and security fencing at new Directorate Office building	5.00
TUENSANG		
9	Construction of Retaining Wall & Drainage at DSO Tuensang , New	20.00
10	Construction of Drainage and Fencing at DSO Residence at Tuensang	10.00
MON		
12	Construction of Retaining wall with RCC pillar at DSO, Mon, New.	5.00
Grand Total		150.00

(Rupees One Crore Fifty Lakhs Only)

Ensure Registration of Every Birth & Death'

