

## **PREFACE**

The census of Nagaland Government Employees is being published by the Directorate annually, since 1964. The present publication contain details about the Government Employees in the state as on 31<sup>st</sup> March 2010 according to their status, tenure, sex, religion and pay range etc. The present census cover all the employees, whether permanent, temporary, work charged or contract employees.

The Department of Economics & Statistics is grateful to all the Government Departments for providing the required information for bringing out this publication. I would like to place on record, my deep appreciation for the strenuous efforts put by my officers and staff of the Directorate for the success of this publication.

I hope, this publication would be useful for the policy makers, planners, research Scholars and public in general who are interested in the employment issues of the state.

Place : Kohima  
Dated: 21-03-2013

Sd/-  
(Y.SACHEO OVUNG)  
Director & H.OD  
Economics & Statistics  
Nagaland : Kohima

## CONTENTS

Page No.

1. List of Tables.
- 2 Findings of the Census.
- 2.1 Number of Employees in different Grades.
- 2.2 Growth of Employment during the years 1964 to 2010.
- 2.3 Male and Female Employees.
- 2.4 Number of Employees by Religion.
- 2.5 Schedule Tribe and other Employees.
- 2.6 Distribution of Employees by Basic Pay.
- 2.7 Distribution of Employees according to Range of Emoluments.
- 2.8 Distribution of Employees according to status and Naga / Non-Naga.
- 2.9 Distribution of Employees according to status & Age.
- 2.10 Distribution of Employees according to status in different Departments.
- 2.11 District-wise distribution of Employees according to status & department.
- 2.12 Distribution of Employees according to status with Educational Qualification.
- 2.13 Distribution of Employees according to status with Plan and Non-Plan Posts.
- 2.14 District wise distribution of Employees.

## LIST OF TABLES

- I. Distribution of Government employees according to Status and Tenure of Service.
- II. Distribution of Government employees according to Status and number of increase from 1964-2010.
- III. Distribution of Government employees according to Status and Sex.
- IV. Distribution of Government employees according to Status and Religion.
- V. Distribution of Government employees according to Status, Tribe etc.
- VI. Distribution of Government employees according to status and their Basic Pay Ranges.
- VI. Distribution of Government employees according to Status and Monthly Emolument Ranges (i.e. Basic pay plus all other allowances).
- VIII. Distribution of Government employees according to status and Naga/Non-Naga.
- IX. Distribution of Government employees by Status and Age.
- X. Distribution of Government employees by status and Department.
- XI. District-wise distribution of Government employees according to status & Department.
- XII. Distribution of Government employees according to status with Educational Qualification.
- XIII. Distribution of Government employees according to status with Plan / Non-Plan Posts.

## KEY FINDINGS OF THE CENSUS

### TABLE-I

#### **2.1. Number of employees in different grades.**

The total number of Government employees as on 31.3.2010 in the various departments were reported to be 90519 which is 4.57 % of the total provisional population of the state. Out of these, Class-I comprised of 3632, Class-II 2380, Class-III 60843 and Class-IV 23664. Class-IV employees constitutes 26.14% of the total Government employees

### TABLE-II

#### **2.2. Growth of employees during 2009 to 2010.**

The total strength of the employees increased to 90519 in 2010 from 87541 in 2009 indicating 3.29 % (2978) rise in employment level of the state over a period of one year.

### TABLE-III

#### **2.3. Male and Female employees**

It can be observed from table III that the level of male and female employment in the state is highly inproportionate. For instance, Class-I male employees was 2863 whereas female was only 769, Class II male employees was 1966 while female employees was 414, and vast gap can be seen in other classes of service as well. Another important observation was that the larger proportions of female employees were engaged in class-III service (14058) which covered 23.11% of total female employees in the state. Female Employment in Class I, Class II and Class IV services were 21.17%, 17.39% and 18.02% respectively.

### TABLE-IV

#### **2.4. Number of employees by religion.**

This table shows that Christians constituted 93.1 % of the total employees with 6.31 % Hindus 0.11 %, Muslims and 0.48 % belonging to other religion during the reference year.

### TABLE-V

#### **2.5. Scheduled Tribe and other employees.**

There are as many as 84,136 Scheduled Tribe employees in the state constituting 92.95 % of the total number of employees. The percentage share of Schedule Tribe employees in Class-I, Class-II, Class-III and Class-IV service were 92.12%, 93.78 %, 94.33 %, 89.29% respectively in the respective Cadres of services.

### TABLE-VI

#### **2.6. Distribution of employees by basic pay.**

The different classes of employees are distributed into 12 (twelve) basic pay groups. It is observed that 40.00 % of the employees during this year received basic pay less than

Rs.4400 Per month. Of the remaining 59.87 % received basic pay less than Rs.34000 per month and the remaining 0.13 % received basic pay of Rs.34000 and above.

#### **TABLE-VII**

#### **2.7. Distribution of employees according to range of emoluments (basic pay plus all other allowances).**

Information on total emoluments which includes basic pay, inner line compensatory allowance, dearness allowance, and house rent allowance were collected and analysed in this table. It is observed that 67.23 % of the total employees fell in the group of those whose total monthly emoluments were less than Rs.16,000 /- per month 32.61 % fell in group between Rs.16,000 to 59,999 /- per month and 0.16 % got the emoluments between Rs.60,000 and above per month.

#### **TABLE-VIII**

#### **2.8. Distribution of employees according to status and Naga / Non-Naga.**

Naga employees constituted 92.65 % of the total employees and the remaining 7.35 % were Non-Naga.

#### **TABLE-IX**

#### **2.9. Distribution of employees according to status with age groups.**

In this table, the data on age-wise distribution of various categories of employees is presented. Age of employees were collected in completed years as on 31.3.2010 but due to non reporting, it was not possible to get the age particulars of 15330 (16.94 %) employees. The available data indicates that the maximum number of employees (24592) were under the age group of 36-45 years, which was 27.17% of the total employees in the state. The least number of employees were in the age group of 56-60 which covered only 2.51% of the total employees.

#### **TABLE-X**

#### **2.10. Distribution of employees according to status in different departments.**

In this table, 64 departments have been listed with the number of employees in each respective department. It can be observed from the table that the Police Department have the highest number of employees(25012) capturing 27.63% of the total employees followed by Education Department with employment percentage of 16.87%. Science and Technology department had the least employees with mere 25 personnel only.

#### **TABLE-XI (A TO K)**

#### **2.11. District-wise of employees according to status & department.**

The tables shows the number of departments set up in the 11 districts of Nagaland. Kohima had 63 departments with 23597 employees which was the highest amongst the districts while longleng had the least number of departments numbering to 21 departments.

## **TABLE-XII**

### **2.12. Distribution of employees according to status & educational qualification.**

The table indicates that 53.21% (max) number of employees in the state were Under Matric with 61.74% of them falling under class III status. Another 2.55% of the employees were illiterate with 91.43% of them serving in Class IV service. However there were no illiterate personnel in the Class I and Class II status.

## **TABLE-XIII**

### **2.13. Distribution of employees according to status with Plan / Non-Plan post.**

This table show that 91.80 % of the post were Non-Plan and 8.20% were Plan Post.

## **TABLE-XIV**

### **2.14. District-wise Distribution of employees.**

It can be observed from the table that Kohima District has the highest number of employees (due to the location of Civil Secretariat and offices of the head of departments) numbering upto 23597 which means that 26.06% are employed in Kohima.

Kiphire District had the lowest level of employment with 1910(2.11%) employees in the district..

**TABLE-I**

**DISTRIBUTION OF GOVERNMENT EMPLOYEES ACCORDING TO STATUS AND TENURE OF SERVICE  
AS ON 31<sup>ST</sup> MARCH, 2010**

<b>Status</b>	<b>TENURE OF SERVICE</b>					
		<b>Permanent</b>	<b>Temporary</b>	<b>Contract &amp; Deputation</b>	<b>Work Charge &amp; Adhoc</b>	<b>Total</b>
<b>1</b>	<b>2</b>	<b>3</b>	<b>4</b>	<b>5</b>	<b>6</b>	<b>7</b>
<b>Class-I</b>	N.O	2121	1362	116	33	3632
	P.C	58.40	37.50	3.20	0.91	100
<b>Class-II</b>	N.O	1002	1250	76	52	2380
	P.C	42.11	52.52	3.19	2.18	100
<b>Class-III</b>	N.O	30940	24609	1670	3624	60843
	P.C	50.85	40.45	2.74	5.96	100
<b>Class-IV</b>	N.O	5743	11159	550	6212	23664
	P.C	24.27	47.16	2.32	26.25	100
<b>Total</b>	N.O	39806	38380	2412	9921	90519
	P.C	43.98	42.39	2.66	10.96	100

**TABLE-II (A)**  
**DISTRIBUTION OF GOVERNMENT EMPLOYEES ACCORDING TO  
STATUS AND NUMBERS FROM 1964-1971**

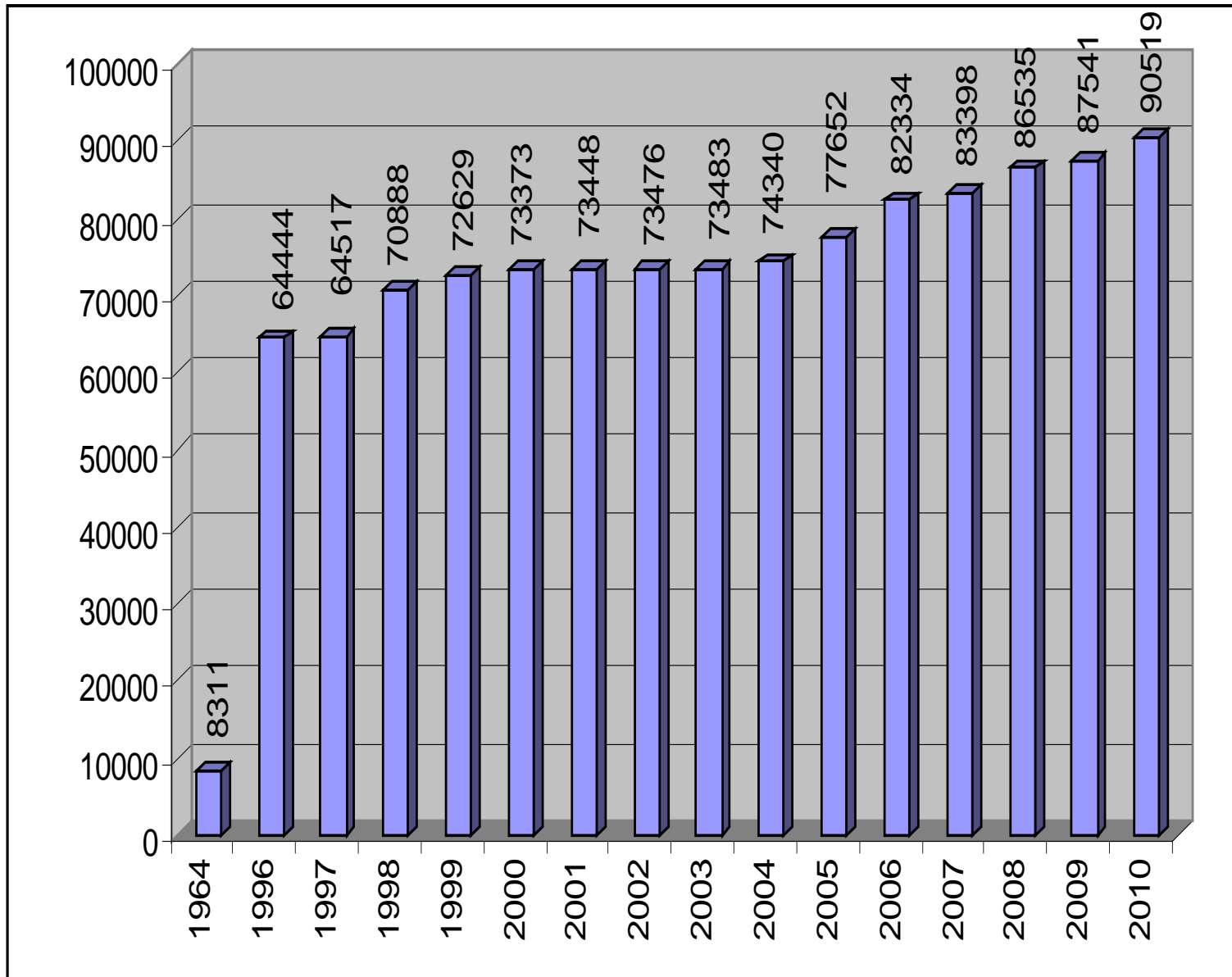
<i>years</i>	<i>Class-I &amp; II</i>	<i>Class-III</i>	<i>Class-IV</i>	<i>Total</i>
1964	287	5395	2629	8311
1965	360	6674	4272	11306
1966	449	7465	5057	12971
1967	475	8105	6866	15446
1968	572	9372	8655	18599
1969	634	10993	10300	21927
1970	682	11223	11341	23246
1971	704	12116	13414	26234

**TABLE-II (B)**  
**DISTRIBUTION OF GOVERNMENT EMPLOYEES ACCORDING TO  
STATUS AND NUMBERS FROM 1987-2010**

<i>Years</i>	<i>Class-I</i>	<i>Class-II</i>	<i>Class-III</i>	<i>Class-IV</i>	<i>Total</i>
1987	1110	1128	27395	22769	52402
1988	1381	1021	27904	23221	53527
1989	1538	969	28634	24434	55575
1990	1763	818	29447	24815	56843
1991	1883	773	30185	25108	57949
1992	1941	777	30779	25417	58914



<b>1993</b>	<b>1977</b>	<b>779</b>	<b>31061</b>	<b>25650</b>	<b>59467</b>
<b>1994</b>	<b>2109</b>	<b>729</b>	<b>31435</b>	<b>26049</b>	<b>60322</b>
<b>1995</b>	<b>2341</b>	<b>851</b>	<b>32485</b>	<b>26535</b>	<b>62212</b>
<b>1996</b>	<b>2410</b>	<b>1000</b>	<b>33621</b>	<b>27413</b>	<b>64444</b>
<b>1997</b>	<b>2591</b>	<b>916</b>	<b>33399</b>	<b>27611</b>	<b>64517</b>
<b>1998</b>	<b>2948</b>	<b>1502</b>	<b>38598</b>	<b>27840</b>	<b>70888</b>
<b>1999</b>	<b>3028</b>	<b>1540</b>	<b>39892</b>	<b>28169</b>	<b>72629</b>
<b>2000</b>	<b>3058</b>	<b>1545</b>	<b>42318</b>	<b>26452</b>	<b>73373</b>
<b>2001</b>	<b>3059</b>	<b>1589</b>	<b>42440</b>	<b>26360</b>	<b>73448</b>
<b>2002</b>	<b>3059</b>	<b>1698</b>	<b>50968</b>	<b>17751</b>	<b>73476</b>
<b>2003</b>	<b>3064</b>	<b>1697</b>	<b>50988</b>	<b>17734</b>	<b>73483</b>
<b>2004</b>	<b>3109</b>	<b>1883</b>	<b>52007</b>	<b>17341</b>	<b>74340</b>
<b>2005</b>	<b>3162</b>	<b>1929</b>	<b>54723</b>	<b>17838</b>	<b>77652</b>
<b>2006</b>	<b>3363</b>	<b>1976</b>	<b>56888</b>	<b>20107</b>	<b>82334</b>
<b>2007</b>	<b>3426</b>	<b>2120</b>	<b>56305</b>	<b>21547</b>	<b>83398</b>
<b>2008</b>	<b>3558</b>	<b>2371</b>	<b>58002</b>	<b>22604</b>	<b>86535</b>
<b>2009</b>	<b>3561</b>	<b>2400</b>	<b>59044</b>	<b>22536</b>	<b>87541</b>
<b>2010</b>	<b>3632</b>	<b>2380</b>	<b>60843</b>	<b>23664</b>	<b>90519</b>



**TABLE-III**

**DISTRIBUTION OF GOVERNMENT EMPLOYEES ACCORDING  
TO STATUS AND SEX AS ON 31<sup>ST</sup> MARCH, 2010**

	SEX			
		<i>Male</i>	<i>Female</i>	<i>Total</i>
<b>1</b>	<b>2</b>	<b>3</b>	<b>4</b>	<b>5</b>
<i>Class-I</i>	N.O	2863	769	3632
	P.C	78.83	21.17	100.00
<i>Class-II</i>	N.O	1966	414	2380
	P.C	82.61	17.39	100.00
<i>Class-III</i>	N.O	46785	14058	60843
	P.C	76.89	23.11	100.00
<i>Class-IV</i>	N.O	19400	4264	23664
	P.C	81.98	18.02	100.00
<b>Total</b>	N.O	71014	19505	90519
	P.C	78.45	21.55	100.00

**TABLE-IV**

**DISTRIBUTION OF GOVERNMENT EMPLOYEES ACCORDING TO STATUS AND RELIGION  
AS ON 31<sup>ST</sup> MARCH, 2010**

<b>Status</b>	<b>RELIGION</b>									
	<b>Christian</b>		<b>Hindu</b>		<b>Muslim</b>		<b>Others</b>		<b>Total</b>	
	<b>Number</b>	<b>P.C</b>	<b>Number</b>	<b>P.C</b>	<b>Number</b>	<b>P.C</b>	<b>Number</b>	<b>P.C</b>	<b>Number</b>	<b>P.C</b>
<b>1</b>	<b>2</b>	<b>3</b>	<b>4</b>	<b>5</b>	<b>6</b>	<b>7</b>	<b>8</b>	<b>9</b>	<b>10</b>	<b>11</b>
<b>Class-I</b>	3390	93.34	222	6.11	7	0.19	13	0.36	3632	100.00
<b>Class-II</b>	2240	94.12	127	5.34	2	0.08	11	0.46	2380	100.00
<b>Class-III</b>	57477	94.47	3098	5.09	39	0.06	229	0.38	60843	100.00
<b>Class-IV</b>	21167	89.45	2262	9.56	49	0.2	186	0.79	23664	100.00
<b>Total</b>	84274	93.10	5709	6.31	97	0.11	439	0.48	90519	100.00

**TABLE-V**

**DISTRIBUTION OF GOVERNMENT EMPLOYEES ACCORDING TO STATUS, SCHEDULED TRIBE  
& OTHERS AS ON 31<sup>ST</sup> MARCH, 2010**

<b>Status</b>	<b>Schedule Tribe</b>		<b>Others</b>		<b>Total</b>	
	<b>Number</b>	<b>P.C</b>	<b>Number</b>	<b>P.C</b>	<b>Number</b>	<b>P.C</b>
<b>1</b>	<b>2</b>	<b>3</b>	<b>4</b>	<b>5</b>	<b>6</b>	<b>7</b>
<b>Class-I</b>	<b>3382</b>	<b>93.12</b>	<b>250</b>	<b>6.88</b>	<b>3632</b>	<b>100.00</b>
<b>Class-II</b>	<b>2232</b>	<b>93.78</b>	<b>148</b>	<b>6.22</b>	<b>2380</b>	<b>100.00</b>
<b>Class-III</b>	<b>57393</b>	<b>94.33</b>	<b>3450</b>	<b>5.67</b>	<b>60843</b>	<b>100.00</b>
<b>Class-IV</b>	<b>21129</b>	<b>89.29</b>	<b>2535</b>	<b>10.71</b>	<b>23664</b>	<b>100.00</b>
<b>Total</b>	<b>84136</b>	<b>92.95</b>	<b>6383</b>	<b>7.05</b>	<b>90519</b>	<b>100.00</b>

**TABLE-VI****DISTRIBUTION OF GOVERNMENT EMPLOYEES ACCORDING TO STATUS AND BASIC PAY RANGES  
AS ON 31<sup>ST</sup> MARCH, 2010**

<b>Basic Pay Ranges (Rs.)</b>	<b>STATUS</b>									
	<b>Class-I</b>		<b>Class-II</b>		<b>Class-III</b>		<b>Class-IV</b>		<b>Total</b>	
	<b>Number</b>	<b>P.C</b>	<b>Number</b>	<b>P.C</b>	<b>Number</b>	<b>P.C</b>	<b>Number</b>	<b>P.C</b>	<b>Number</b>	<b>P.C</b>
<b>1</b>	<b>2</b>	<b>3</b>	<b>4</b>	<b>5</b>	<b>6</b>	<b>7</b>	<b>8</b>	<b>9</b>	<b>10</b>	<b>11</b>
<b>Below 4400</b>			<b>19</b>	<b>0.80</b>	<b>21130</b>	<b>34.73</b>	<b>15054</b>	<b>63.62</b>	<b>36203</b>	<b>39.99</b>
<b>4400 – 9999</b>	<b>623</b>	<b>17.15</b>	<b>1136</b>	<b>47.73</b>	<b>33229</b>	<b>54.62</b>	<b>7816</b>	<b>33.03</b>	<b>42804</b>	<b>47.29</b>
<b>10000 – 15999</b>	<b>1335</b>	<b>36.76</b>	<b>495</b>	<b>20.80</b>	<b>5869</b>	<b>9.65</b>	<b>756</b>	<b>3.19</b>	<b>8455</b>	<b>9.34</b>
<b>16000 – 21999</b>	<b>774</b>	<b>21.31</b>	<b>549</b>	<b>23.07</b>	<b>531</b>	<b>0.87</b>	<b>38</b>	<b>0.16</b>	<b>1892</b>	<b>2.09</b>
<b>22000 – 27999</b>	<b>561</b>	<b>15.45</b>	<b>145</b>	<b>6.09</b>	<b>79</b>	<b>0.13</b>			<b>785</b>	<b>0.87</b>
<b>28000 – 33999</b>	<b>220</b>	<b>6.06</b>	<b>33</b>	<b>1.39</b>	<b>2</b>				<b>255</b>	<b>0.28</b>
<b>34000 – 39999</b>	<b>81</b>	<b>2.23</b>	<b>3</b>	<b>0.12</b>	<b>3</b>				<b>87</b>	<b>0.10</b>
<b>40000 – 45999</b>	<b>19</b>	<b>0.52</b>							<b>19</b>	<b>0.02</b>
<b>46000 – 51999</b>	<b>14</b>	<b>0.38</b>							<b>14</b>	<b>0.02</b>
<b>52000 – 59999</b>	<b>1</b>	<b>0.03</b>							<b>1</b>	<b>0.00</b>
<b>60000 and above</b>	<b>4</b>	<b>0.11</b>							<b>4</b>	<b>0.00</b>
<b>Total</b>	<b>3632</b>	<b>100.00</b>	<b>2380</b>	<b>100.00</b>	<b>60843</b>	<b>100.00</b>		<b>100.00</b>	<b>90519</b>	<b>100.00</b>

**TABLE-VII****DISTRIBUTION OF GOVERNMENT EMPLOYEES ACCORDING TO MONTHLY EMOLUMENT RANGES  
(BASIC PAY RANGES PLUS ALL OTHER ALLOWANCES) AS ON 31<sup>ST</sup> MARCH, 2010**

Basic Pay Ranges (Rs.)	STATUS									
	Class-I		Class-II		Class-III		Class-IV		Total	
	Number	P.C	Number	P.C	Number	P.C	Number	P.C	Number	P.C
1	2	3	4	5	6	7	8	9	10	11
<i>Below 4400</i>					1128	1.85	4828	20.40	5956	6.58
<i>4400 – 9999</i>	17	0.47	9	0.38	16136	26.52	8558	36.16	24720	27.31
<i>10000 – 15999</i>	29	0.80	165	6.93	20966	34.46	9016	38.11	30176	33.34
<i>16000 – 21999</i>	202	5.56	809	33.99	14897	24.48	1170	4.94	17078	18.87
<i>22000 – 27999</i>	665	18.31	409	17.18	6935	11.40	83	0.35	8092	8.94
<i>28000 – 33999</i>	597	16.44	504	21.18	714	1.17	6	0.03	1821	2.01
<i>34000 – 39999</i>	515	14.18	385	16.18	52	0.09	3	0.01	955	1.05
<i>40000 – 45999</i>	1055	29.05	43	1.81	10	0.02			1108	1.22
<i>46000 – 51999</i>	251	6.91	44	1.85	5	0.01			300	0.33
<i>52000 – 59999</i>	164	4.51	10	0.42					174	0.19
<i>60000 and above</i>	137	3.77	2	0.08					139	0.16
<b>Total</b>	<b>3632</b>	<b>100.00</b>	<b>2380</b>	<b>100.00</b>	<b>60843</b>	<b>100.00</b>	<b>23664</b>	<b>100.00</b>	<b>90519</b>	<b>100.00</b>

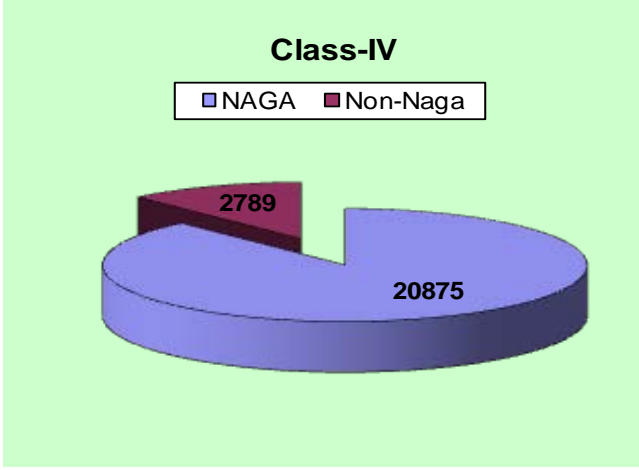
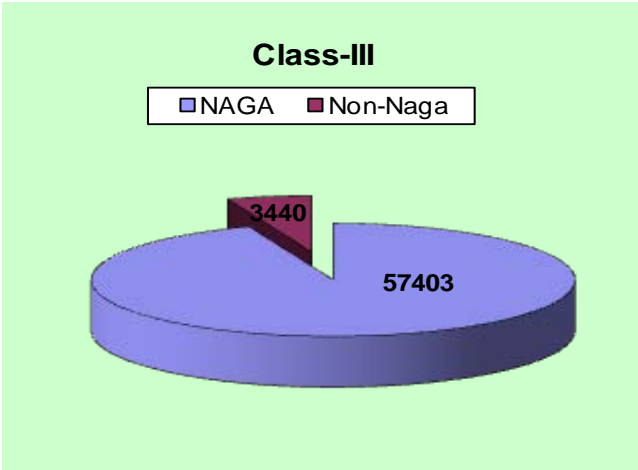
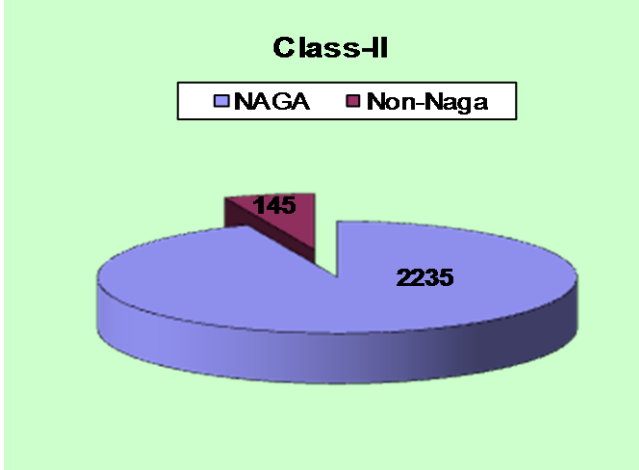
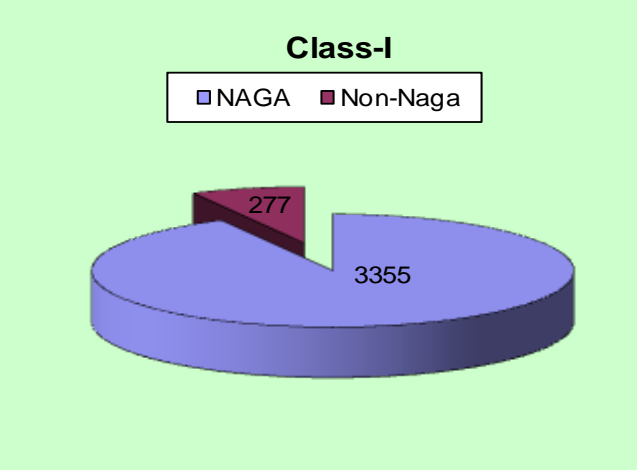
**TABLE-VIII**

**DISTRIBUTION OF GOVERNMENT EMPLOYEES ACCORDING TO STATUS AND NAGA / NON-NAGA AS  
ON 31<sup>ST</sup> MARCH, 2010**

<b>Status</b>	<b>Naga</b>		<b>Non-Naga</b>		<b>Total</b>	
	<b>Number</b>	<b>P.C</b>	<b>Number</b>	<b>P.C</b>	<b>Number</b>	<b>P.C</b>
<b>1</b>	<b>2</b>	<b>3</b>	<b>4</b>	<b>5</b>	<b>6</b>	<b>7</b>
<b>Class-I</b>	<b>3355</b>	<b>92.37</b>	<b>277</b>	<b>7.63</b>	<b>3632</b>	<b>100</b>
<b>Class-II</b>	<b>2235</b>	<b>93.91</b>	<b>145</b>	<b>6.09</b>	<b>2380</b>	<b>100</b>
<b>Class-III</b>	<b>57403</b>	<b>94.35</b>	<b>3440</b>	<b>5.65</b>	<b>60843</b>	<b>100</b>
<b>Class-IV</b>	<b>20875</b>	<b>88.21</b>	<b>2789</b>	<b>11.79</b>	<b>23664</b>	<b>100</b>
<b>Total</b>	<b>83868</b>	<b>92.65</b>	<b>6651</b>	<b>7.35</b>	<b>90519</b>	<b>100</b>



**DISTRIBUTION OF GOVERNMENT EMPLOYEES, ACCORDING TO STATUS AND NAGA/NON-NAGA AS ON 31-3-2010**

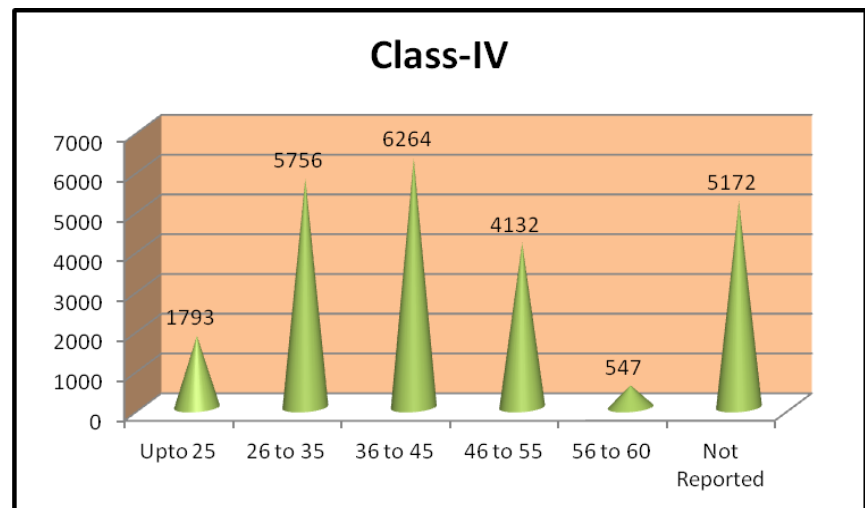
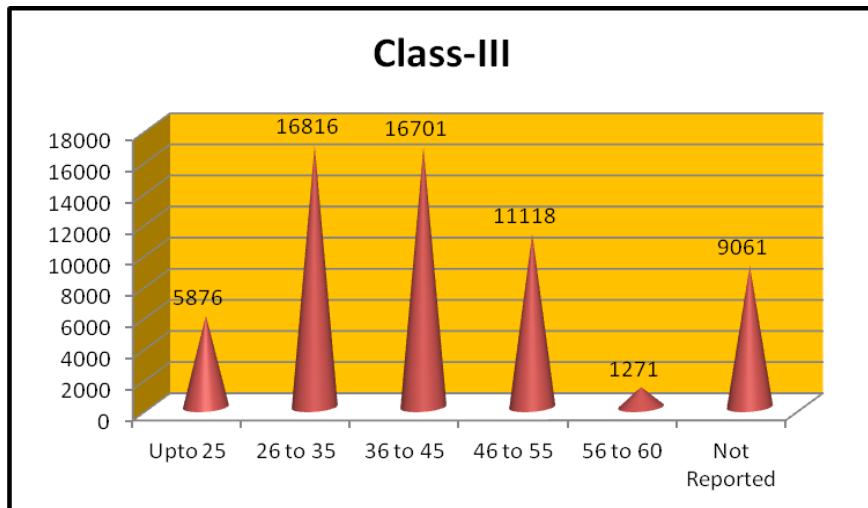
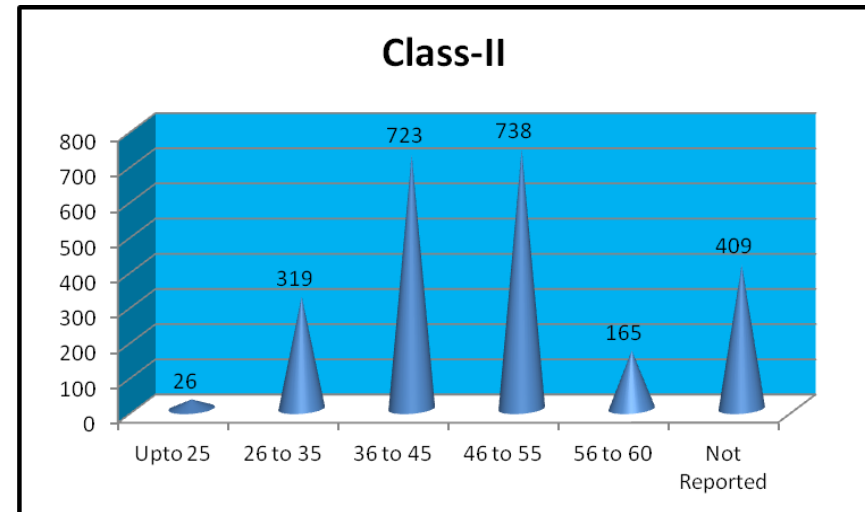
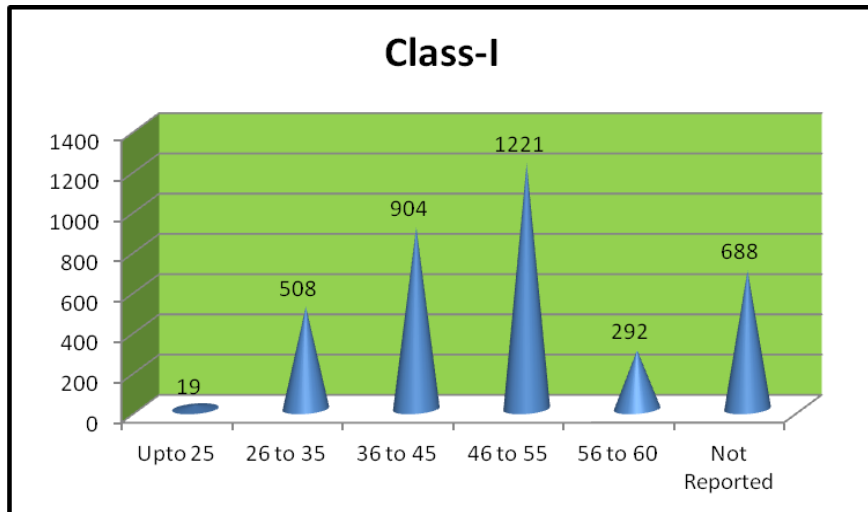


**TABLE – IX**

**DISTRIBUTION OF GOVERNMENT EMPLOYEES ACCORDING TO STATUS AND AGE  
AS ON 31<sup>ST</sup> MARCH, 2010**

<i>Age Group</i>	<b>STATUS</b>									
	<i>Class-I</i>		<i>Class-II</i>		<i>Class-III</i>		<i>Class-IV</i>		<i>Total</i>	
	<i>Number</i>	<i>P.C</i>	<i>Number</i>	<i>P.C</i>	<i>Number</i>	<i>P.C</i>	<i>Number</i>	<i>P.C</i>	<i>Number</i>	<i>P.C</i>
<b>1</b>	<b>2</b>	<b>3</b>	<b>4</b>	<b>5</b>	<b>6</b>	<b>7</b>	<b>8</b>	<b>9</b>	<b>10</b>	<b>11</b>
<i>Upto 25</i>	19	0.52	26	1.09	5876	9.66	1793	7.58	7714	8.52
<i>26 to 35</i>	508	13.99	319	13.41	16816	27.64	5756	24.32	23399	25.85
<i>36 to 45</i>	904	24.89	723	30.38	16701	27.45	6264	26.47	24592	27.17
<i>46 to 55</i>	1221	33.62	738	31.01	11118	18.27	4132	17.46	17209	19.01
<i>56 to 60</i>	292	8.04	165	6.93	1271	2.09	547	2.31	2275	2.51
<i>Not Reported</i>	688	18.94	409	17.19	9061	14.89	5172	21.86	15330	16.94
<b>Total</b>	<b>3632</b>	<b>100.00</b>	<b>2380</b>	<b>100.00</b>	<b>60843</b>	<b>100.00</b>	<b>23664</b>	<b>100.00</b>	<b>90519</b>	<b>100.00</b>

## DISTRIBUTION OF GOVERNMENT EMPLOYEES BY STATUS AND AGE AS ON 31-3-2010



**TABLE-X****DISTRIBUTION OF GOVERNMENT EMPLOYEES BY STATUS AND DEPARTMENT AS ON 31<sup>ST</sup> MARCH, 2010**

<b>Sl.No.</b>	<b>Department</b>	<b>Class-I</b>	<b>Class-II</b>	<b>Class-III</b>	<b>Class-IV</b>	<b>Total</b>	<b>Rank</b>
<b>1</b>	<b>2</b>	<b>3</b>	<b>4</b>	<b>5</b>	<b>6</b>	<b>7</b>	<b>8</b>
1.	<i>Administrative Training Institute</i>	13		26	22	61	59
2.	<i>Agriculture</i>	103	102	777	371	1353	11
3.	<i>Animal Husbandry &amp; Veterinary</i>	164	19	630	726	1539	10
4.	<i>Art and Culture</i>	14	22	106	76	218	40
5.	<i>Assembly Secretariat</i>	36	13	87	56	192	43
6.	<i>Civil Secretariat</i>	279	101	1260	731	2371	8
7.	<i>Co-operation</i>	14	8	181	62	265	39
8.	<i>Economics &amp; Statistics</i>	16	38	474	76	604	22
9.	<i>Election</i>	10	20	75	43	148	49
10.	<i>Electricity</i>	94	152	1469	1329	3044	7
11.	<i>Employment &amp; Craftsman Training</i>	21	21	243	117	402	28
12.	<i>Evaluation</i>	7	10	63	23	103	53
13.	<i>Excise</i>	14	35	331	43	423	27
14.	<i>Fire Service</i>	2	6	47	270	325	35
15.	<i>Fisheries</i>	14	19	188	87	308	36
16.	<i>Forest</i>	52	84	876	183	1195	13
17.	<i>General Administration</i>	170	32	2317	2095	4614	5
18.	<i>Geology &amp; Mining</i>	53	23	178	111	365	30
19.	<i>Governor's Secretariat</i>	10	1	22	33	66	58
20.	<i>Health Services</i>	428	52	3467	2874	6821	3

21.	<i>Higher Education</i>	474	7	236	307	1024	15
22.	<i>Higher Technical Education</i>	47	3	78	78	206	42
23.	<i>Home Guards</i>	14	11	163	148	336	32
24.	<i>Horticulture</i>	30	25	174	253	482	25
25.	<i>Industries</i>	105	66	687	347	1205	12
26.	<i>Information &amp; Public Relation</i>	11	30	433	157	631	21
27.	<i>Information Technology</i>	5	1	13	7	26	63
28.	<i>Irrigation &amp; Flood Control</i>	40	35	452	230	757	19
29.	<i>Jail &amp; Prisons</i>	10	12	343	101	466	26
30.	<i>Judicial</i>	37	5	151	101	294	38
31.	<i>Labour</i>	12	7	85	51	155	47
32.	<i>Land Record &amp; Survey</i>	16	6	180	125	327	34
33.	<i>Legal Metrology (W &amp; M) &amp; Consumer Protection</i>	10	2	74	46	132	52
34.	<i>Lotteries</i>	5	3	22	18	48	61
35.	<i>N.B.S.E</i>	31	3	38	14	86	55
36.	<i>N.P.S.C</i>	14	5	26	27	72	57
37.	<i>N.S.T</i>	29	21	712	330	1092	14
38.	<i>P.W.D (Housing)</i>	68	108	1081	1028	2285	9
39.	<i>P.W.D (Mechanical)</i>	17	64	515	349	945	17
40.	<i>P.W.D (Road &amp; Bridges)</i>	151	215	2561	1783	4710	4
41.	<i>Planning &amp; Co-ordination</i>	26	19	97	32	174	46
42.	<i>Police</i>	256	215	22175	2366	25012	1
43.	<i>Printing &amp; Stationary</i>	13	9	283	30	335	33
44.	<i>Public Health Engineering</i>	75	146	1228	2637	4086	6
45.	<i>Rural Development</i>	122	48	530	254	954	16

46.	<b>S.C.E.R.T</b>	47	23	43	38	151	48
47.	<b>S.I.R.D</b>	10	2	15	13	40	62
48.	<b>School Education</b>	163	223	12827	2060	15273	2
49.	<b>Science &amp; Technology</b>	5		15	5	25	64
50.	<b>Sericulture</b>	14	13	186	82	295	37
51.	<b>Social Security &amp; Welfare</b>	11	72	458	129	670	20
52.	<b>Soil Conservation</b>	62	51	530	238	881	18
53.	<b>Supply</b>	15	2	309	202	528	24
54.	<b>Taxes</b>	12	13	109	83	217	41
55.	<b>Tourism</b>	14	11	56	55	136	51
56.	<b>Transport</b>	7	10	128	42	187	44
57.	<b>Treasury &amp; Accounts</b>	20	33	370	136	559	23
58.	<b>Underdeveloped Areas</b>	13	8	36	41	98	54
59.	<b>Urban Development</b>	30	21	80	51	182	45
60.	<b>Vigilance Commission</b>	16	7	40	18	81	56
61.	<b>Waste Land</b>	17	8	88	29	142	50
62.	<b>Women Development</b>	7	3	40	7	57	60
63.	<b>Youth Resources &amp; Sports</b>	11	20	162	157	350	31
64.	<b>PWD (N.H)</b>	26	36	197	131	390	29
<b>Total</b>		<b>3632</b>	<b>2380</b>	<b>60843</b>	<b>23664</b>	<b>90519</b>	

**TABLE-XI (A)**

**DISTRIBUTION OF GOVERNMENT EMPLOYEES ACCORDING TO STATUS, DEPARTMENT AND DISTRICT AS ON 31<sup>ST</sup>  
MARCH, 2010  
DISTRICT : KOHIMA.**

<b>Sl.No.</b>	<b>Department</b>	<b>Class-I</b>	<b>Class-II</b>	<b>Class-III</b>	<b>Class-IV</b>	<b>Total</b>	<b>Rank</b>
<b>1</b>	<b>2</b>	<b>3</b>	<b>4</b>	<b>5</b>	<b>6</b>	<b>7</b>	<b>8</b>
1.	<i>Administrative Training Institute</i>	13		26	22	61	46
2.	<i>Agriculture</i>	36	13	128	55	232	20
3.	<i>Animal Husbandry &amp; Veterinary</i>	58	13	187	132	390	12
4.	<i>Art and Culture</i>	14	15	66	51	146	31
5.	<i>Assembly Secretariat</i>	36	13	87	56	192	23
6.	<i>Civil Secretariat</i>	279	101	1260	731	2371	2
7.	<i>Co-operation</i>	6	4	74	19	103	34
8.	<i>Directorate of Technical Education</i>	23	3	35	19	80	41
9.	<i>Directorate of Urban Development</i>	23	15	42	18	98	36
10.	<i>Economics &amp; Statistics</i>	16	28	253	31	328	16
11.	<i>Election</i>	6	5	27	13	51	51
12.	<i>Electricity</i>	39	49	338	231	657	8
13.	<i>Employment &amp; Craftsman Training</i>	13	3	103	42	161	28
14.	<i>Evaluation</i>	7	3	28	9	47	54
15.	<i>Excise</i>	1	4	42	3	50	52
16.	<i>Fire Service</i>	2	6	47	270	325	17
17.	<i>Fisheries</i>	9	8	56	24	97	37
18.	<i>Forest</i>	24	16	139	42	221	22

19.	<i>General Administration</i>	28	10	253	201	492	9
20.	<i>Governor's Secretariat</i>	10	1	22	33	66	45
21.	<i>Health Services</i>	185	19	1052	624	1880	4
22.	<i>Higher Education</i>	145	1	103	112	361	14
23.	<i>Home Guards</i>	6	2	36	11	55	49
24.	<i>Horticulture</i>	16	6	34	43	99	35
25.	<i>Industries</i>	62	18	270	89	439	11
26.	<i>Information &amp; Public Relation</i>	11	11	180	43	245	18
27.	<i>Information Technology</i>	5	1	13	7	26	60
28.	<i>Irrigation &amp; Flood Control</i>	16	6	94	42	158	29
29.	<i>Jail &amp; Prisons</i>	9	5	128	13	155	30
30.	<i>Judicial</i>	5		19	13	37	56
31.	<i>Labour</i>	7		33	12	52	50
32.	<i>Land Record &amp; Survey</i>	1		20	12	33	58
33.	<i>Land Resource</i>	11	4	50	12	77	42
34.	<i>Legal Metrology (W &amp;M) &amp; Consumer Protection</i>	5	1	31	19	56	48
35.	<i>Lotteries</i>	5	3	22	18	48	53
36.	<i>N.B.S.E</i>	31	3	38	14	86	38
37.	<i>N.P.S.C</i>	14	5	26	27	72	43
38.	<i>N.S.T</i>	3	1	138	48	190	24
39.	<i>P.W.D (Housing)</i>	50	77	603	531	1261	5
40.	<i>P.W.D (N.H)</i>	14	14	117	98	243	19
41.	<i>P.W.D (Mechanical)</i>	12	44	288	130	474	10
42.	<i>P.W.D (Road &amp; Bridges)</i>	44	51	456	263	814	6
43.	<i>Planning &amp; Co-ordination</i>	26	19	97	32	174	27
44.	<i>Police</i>	89	83	4784	311	5267	1



45.	<i>Printing &amp; Stationary</i>	13	9	283	30	335	15
46.	<i>Public Health Engineering</i>	30	29	266	405	730	7
47.	<i>Rural Development</i>	39	6	138	39	222	21
48.	<i>S.C.E.R.T</i>	19	22	30	11	82	39
49.	<i>S.I.R.D</i>	10	2	15	13	40	55
50.	<i>School Education</i>	51	61	1826	298	2236	3
51.	<i>Science &amp; Technology</i>	5		15	5	25	61
52.	<i>Sericulture</i>	9	5	49	14	77	42
53.	<i>Social Security &amp; Welfare</i>	11	10	88	25	134	33
54.	<i>Soil Conservation</i>	34	18	224	93	369	13
55.	<i>Supply</i>	1		21	14	36	57
56.	<i>Taxes</i>	1	1	22	8	32	59
57.	<i>Tourism</i>	14	11	56	55	136	32
58.	<i>Transport</i>	6	4	42	16	68	44
59.	<i>Treasury &amp; Accounts</i>	11	12	133	30	186	25
60.	<i>Underdeveloped Areas</i>	13	8	36	41	98	36
61.	<i>Vigilance Commission</i>	16	7	40	18	81	40
62.	<i>Women Development</i>	7	3	40	7	57	47
63.	<i>Youth Resources &amp; Sports</i>	11	10	101	61	183	26
<b>Total</b>		<b>1716</b>	<b>902</b>	<b>15270</b>	<b>5709</b>	<b>23597</b>	

**TABLE-XI(B)**  
**DISTRICT : PHEK**

Sl. No.	Department	Class-I	Class-II	Class-III	Class-IV	Total	Rank
1	2	3	4	5	6	7	8
1.	<i>Agriculture</i>	6	10	62	17	95	9
2.	<i>Animal Husbandry &amp; Veterinary</i>	8	1	24	60	93	11
3.	<i>Art &amp; Culture</i>		1	6	3	10	30
4.	<i>Co-operation</i>	1		15	3	19	25
5.	<i>Economics &amp; Statistics</i>		1	13	3	17	27
6.	<i>Election</i>	1	1	5	3	10	30
7.	<i>Electricity</i>	4	9	99	86	198	7
8.	<i>Employment &amp; Craftsman Training</i>	1	3	20	9	33	19
9.	<i>Evaluation</i>		1	6	2	9	31
10.	<i>Excise</i>	1	1	21	6	29	21
11.	<i>Fisheries</i>	1	1	11	4	17	27
12.	<i>Forest</i>	1	9	74	7	91	12
13.	<i>General Administration</i>	11	5	228	842	1086	3
14.	<i>Health Services</i>	26	7	266	320	619	5
15.	<i>Higher Education</i>	56	1	19	14	90	13
16.	<i>Home Guards</i>	1	1	8	12	22	23
17.	<i>Horticulture</i>	1	2	8	4	15	28
18.	<i>Industries</i>	2	2	21	17	42	18
19.	<i>Information &amp; Public Relation</i>		3	26	13	42	18
20.	<i>Irrigation &amp; Flood Control</i>	1	3	15	9	28	22
21.	<i>Jail &amp; Prison</i>		1	27	3	31	20
22.	<i>Judicial</i>	5		18	10	33	19
23.	<i>Labour</i>	1	1	8	8	18	26

24.	<i>Land Records &amp; Survey</i>	1		9	11	21	24
25.	<i>Legal Metrology (W &amp; M) &amp; Consumer Protection</i>			4	2	6	34
26.	<i>N.S.T</i>		2	34	14	50	15
27.	<i>P.W.D (Housing)</i>			44	70	114	8
28.	<i>P.W.D (Mechanical)</i>			19	25	44	17
29.	<i>P.W.D (Road &amp; Bridges)</i>	4	7	130	512	653	4
30.	<i>Police</i>	14	7	1525	128	1674	1
31.	<i>Public Health Engineering</i>	4	10	89	311	414	6
32.	<i>Rural Development</i>	10	4	58	22	94	10
33.	<i>School Education</i>	16	5	1072	194	1287	2
34.	<i>Sericulture</i>		1	12	6	19	25
35.	<i>Social Security &amp; Welfare</i>		6	37	6	49	16
36.	<i>Soil Conservation</i>	4	6	37	17	64	14
37.	<i>Supply</i>	1		16	11	28	22
38.	<i>Taxes</i>		1	4	4	9	31
39.	<i>Transport</i>		1	9	4	14	29
40.	<i>Treasury &amp; Accounts</i>	2	2	31	14	49	16
41.	<i>Youth Resources &amp; Sports</i>		2	8	7	17	27
42.	<i>Land Resource</i>	1		4	2	7	33
43.	<i>Urban Development</i>	1	1	4	2	8	32
<b>Total</b>		<b>186</b>	<b>119</b>	<b>4146</b>	<b>2817</b>	<b>7268</b>	

**TABLE-XI (C)**  
**DISTRICT : MOKOKCHUNG**

Sl. No.	Department	Class-I	Class-II	Class-III	Class-IV	Total	Rank
1	2	3	4	5	6	7	8
1.	<i>Agriculture</i>	12	17	114	83	226	11
2.	<i>Animal Husbandry &amp; Veterinary</i>	20		77	146	243	9
3.	<i>Art &amp; Culture</i>		1	5	3	9	42
4.	<i>Co-operation</i>	1		17	8	26	34
5.	<i>Economics &amp; Statistics</i>		1	27	6	34	30
6.	<i>Election</i>		2	5	3	10	41
7.	<i>Electricity</i>	18	34	309	237	598	5
8.	<i>Employment &amp; Craftsman Training</i>	1	3	20	11	35	29
9.	<i>Evaluation</i>		1	5	2	8	43
10.	<i>Excise</i>	1	4	26	2	33	31
11.	<i>Fisheries</i>	1	1	13	16	31	32
12.	<i>Forest</i>	2	7	64	14	87	18
13.	<i>General Administration</i>	18	1	155	97	271	8
14.	<i>Health Services</i>	49	10	479	407	945	3
15.	<i>Higher Technical Education</i>	68		28	63	159	12
16.	<i>Home Guards</i>	1	1	6	80	88	17
17.	<i>Horticulture</i>	2	2	31	60	95	16
18.	<i>Industries</i>	1	3	42	28	74	20
19.	<i>Information &amp; Public Relation</i>		2	41	14	57	25
20.	<i>Irrigation &amp; Flood Control</i>	3	3	85	35	126	13
21.	<i>Jail &amp; Prison</i>	1	1	51	12	65	21
22.	<i>Judicial</i>	5	1	18	16	40	28
23.	<i>Labour</i>	1		7	5	13	40

24.	<i>Land Records &amp; Survey</i>			19	10	29	33
25.	<i>Legal Metrology (W &amp; M) &amp; Consumer Protection</i>		1	6	7	14	39
26.	<i>N.S.T</i>	3	2	83	33	121	14
27.	<i>P.W.D (Housing)</i>	5	5	143	235	388	7
28.	<i>P.W.D (Mechanical)</i>	3	13	128	96	240	10
29.	<i>PWD (N.H)</i>	4	8	63	31	106	15
30.	<i>P.W.D (Road &amp; Bridges)</i>	31	41	486	194	752	4
31.	<i>Police</i>	30	20	2772	223	3045	1
32.	<i>Public Health Engineering</i>	7	20	188	217	432	6
33.	<i>Rural Development</i>	12	7	59	28	106	15
34.	<i>School Education</i>	13	10	2031	223	2277	2
35.	<i>SCERT</i>	14		5	14	33	31
36.	<i>Sericulture</i>	1		35	12	48	26
37.	<i>Social Security &amp; Welfare</i>		7	44	10	61	23
38.	<i>Soil Conservation</i>	4	9	50	18	81	19
39.	<i>Supply</i>	1		25	19	45	27
40.	<i>Taxes</i>	1	3	14	6	24	36
41.	<i>Transport</i>	1		16	5	22	37
42.	<i>Technical Education</i>	9		7	9	25	35
43.	<i>Treasury &amp; Accounts</i>	1	3	41	14	59	24
44.	<i>Youth Resources &amp; Sports</i>		2	18	44	64	22
45.	<i>Land Resource</i>	1		5	3	9	42
46.	<i>Urban Development</i>	1	4	5	7	17	38
<b>Total</b>		<b>347</b>	<b>250</b>	<b>7868</b>	<b>2806</b>	<b>11271</b>	

**TABLE-XI (D)**  
**DISTRICT: WOKHA**

Sl. No.	Department	Class-I	Class-II	Class-III	Class-IV	Total	Rank
1	2	3	4	5	6	7	8
1.	<i>Agriculture</i>	7	11	73	38	129	7
2.	<i>Animal Husbandry &amp; Veterinary</i>	7	1	51	52	111	8
3.	<i>Art &amp; Culture</i>		1	5	3	9	33
4.	<i>Co-operation</i>	1		14	4	19	27
5.	<i>Economics &amp; Statistics</i>		1	19	2	22	24
6.	<i>Election</i>	1	1	5	3	10	32
7.	<i>Electricity</i>	3	9	49	36	97	9
8.	<i>Employment &amp; Craftsman Training</i>	1	2	21	14	38	18
9.	<i>Evaluation</i>		1	5	1	7	34
10.	<i>Excise</i>		1	17	3	21	25
11.	<i>Fisheries</i>	1	2	11	6	20	26
12.	<i>Forest</i>	3	4	54	10	71	11
13.	<i>General Administration</i>	16	3	260	101	380	4
14.	<i>Health Services</i>	25	2	187	168	382	3
15.	<i>Higher Education</i>	23	1	11	21	56	13
16.	<i>Home Guards</i>	1	1	5	3	10	32
17.	<i>Horticulture</i>	1	2	18	31	52	15
18.	<i>Industries</i>	4	5	29	26	64	12
19.	<i>Information &amp; Public Relation</i>		4	36	11	51	16
20.	<i>Irrigation &amp; Flood Control</i>	2	1	19	8	30	21
21.	<i>Jail &amp; Prison</i>			29	2	31	20
22.	<i>Judicial</i>	3		9	5	17	28
23.	<i>Labour</i>		1	4	2	7	34

24.	<i>Land Records &amp; Survey</i>	1		18	10	29	22
25.	<i>Legal Metrology (W &amp; M) &amp; Consumer Protection</i>	1		6	5	12	31
26.	<i>N.S.T</i>		1	28	25	54	14
28.	<i>Police</i>	12	11	1104	445	1572	1
	<i>Land Resource</i>	1		3	3	7	34
30.	<i>Public Health Engineering</i>	4	9	64	191	268	6
31.	<i>Rural Development</i>	10	7	32	31	80	10
32.	<i>School Education</i>	7	6	882	169	1064	2
33.	<i>Sericulture</i>	1	1	13	4	19	27
34.	<i>Social Security &amp; Welfare</i>		5	33	8	46	17
35.	<i>Soil Conservation</i>	3		36	12	51	16
36.	<i>Supply</i>	1		17	5	23	23
37.	<i>Taxes</i>	1		7	4	12	31
38.	<i>Transport</i>		1	11	4	16	29
39.	<i>Treasury &amp; Accounts</i>		2	24	9	35	19
40.	<i>Urban Development</i>	1		4	4	9	33
41.	<i>Youth Resources &amp; Sports</i>		1	6	7	14	30
<b>Total</b>		<b>155</b>	<b>123</b>	<b>3434</b>	<b>1577</b>	<b>5289</b>	

**TABLE-XI (E)**  
**DISTRICT : ZUNHEBOTO**

Sl. No.	Department	Class-I	Class-II	Class-III	Class-IV	Total	Rank
1	2	3	4	5	6	7	8
1.	<i>Agriculture</i>	5	4	44	20	73	12
2.	<i>Animal Husbandry &amp; Veterinary</i>	3		57	30	90	11
3.	<i>Art &amp; Culture</i>		1	5	3	9	29
4.	<i>Co-operation</i>	1		11	4	16	26
5.	<i>Economics &amp; Statistics</i>		1	14	5	20	23
6.	<i>Election</i>		2	4	3	9	29
7.	<i>Electricity</i>	3	3	72	52	130	8
8.	<i>Employment &amp; Craftsman Training</i>	1	3	12	8	24	22
9.	<i>Evaluation</i>		1	4	2	7	31
10.	<i>Excise</i>	1	1	19	3	24	22
11.	<i>Fisheries</i>		2	14	2	18	24
12.	<i>Forest</i>	4	4	39	12	59	14
13.	<i>General Administration</i>	17	3	319	178	517	5
14.	<i>Health Services</i>	19		234	288	541	4
15.	<i>Higher Education</i>	22		14	10	46	18
16.	<i>Home Guards</i>	1	1	5	2	9	29
17.	<i>Horticulture</i>	2	1	13	17	33	20
18.	<i>Industries</i>	5	1	37	30	73	12
19.	<i>Information &amp; Public Relation</i>		3	36	11	50	17
20.	<i>Irrigation &amp; Flood Control</i>	2	2	17	8	29	21
21.	<i>Jail &amp; Prison</i>			4	13	17	25
22.	<i>Judicial</i>	2	1	7	3	13	27
23.	<i>Land Records &amp; Survey</i>		1	11	12	24	22



24.	<i>Legal Metrology (W &amp; M) &amp; Consumer Protection</i>	1		5	5	11	28
25.	<i>N.S.T</i>	1		41	14	56	15
26.	<i>P.W.D (Road &amp; Bridges)</i>	11	15	345	183	554	3
27.	<i>Police</i>	10	9	1662	117	1798	2
28.	<i>Public Health Engineering</i>	4	15	87	216	322	6
30.	<i>School Education</i>	12	13	1874	166	2065	1
31.	<i>Sericulture</i>		1	3	2	6	32
32.	<i>Social Security &amp; Welfare</i>		7	43	15	65	13
33.	<i>Soil Conservation</i>	3	2	30	18	53	7
34.	<i>Supply</i>	1		25	15	41	19
35.	<i>Taxes</i>		2	4	5	11	28
36.	<i>Transport</i>		1	8	2	11	28
37.	<i>Treasury &amp; Accounts</i>	2	8	25	16	51	16
38.	<i>Youth Resources &amp; Sports</i>		2	7	8	17	25
39.	<i>Land Resource</i>		1	4	2	7	31
40.	<i>Technical Education</i>	15		36	50	101	9
41.	<i>Urban Development</i>	1		4	3	8	30
<b>Total</b>		<b>158</b>	<b>114</b>	<b>5248</b>	<b>1580</b>	<b>7100</b>	

**TABLE-XI (F)**  
**DISTRICT: TUENSANG**

Sl. No.	Department	Class-I	Class-II	Class-III	Class-IV	Total	Rank
1	2	3	4	5	6	7	8
1.	<i>Agriculture</i>	4	10	67	39	120	10
2.	<i>Animal Husbandry &amp; Veterinary</i>	11	1	42	69	123	9
3.	<i>Art &amp; Culture</i>		1	12	6	19	31
4.	<i>Co-operation</i>	1	1	15	6	23	29
5.	<i>Economics &amp; Statistics</i>		1	25	7	33	25
6.	<i>Election</i>		2	4	4	10	36
7.	<i>Electricity</i>	5	9	231	186	431	6
8.	<i>Employment &amp; Craftsman Training</i>	1	3	17	8	29	27
9.	<i>Evaluation</i>		1	6	2	9	37
10.	<i>Excise</i>		4	45	3	52	21
11.	<i>Fisheries</i>	1	1	20	9	31	26
12.	<i>Forest</i>	1	6	60	9	76	14
13.	<i>General Administration</i>	18	2	316	156	492	4
14.	<i>Health Services</i>	27	9	396	309	741	3
15.	<i>Higher Education</i>	33	1	15	13	62	18
16.	<i>Home Guards</i>	1	1	4	3	9	37
17.	<i>Horticulture</i>	1	1	8	21	31	26
18.	<i>Industries</i>	4	4	31	21	60	19
19.	<i>Information &amp; Public Relation</i>		3	50	35	88	13
20.	<i>Irrigation &amp; Flood Control</i>	2	1	24	15	42	23
21.	<i>Jail &amp; Prison</i>		2	10	44	56	20
22.	<i>Judicial</i>	3		10	4	17	32
23.	<i>Labour</i>	1		5	3	9	37

24.	<i>Land Records &amp; Survey</i>		1	16	11	28	28
25.	<i>Legal Metrology (W &amp; M) &amp; Consumer Protection</i>	1		4	5	10	36
26.	<i>N.S.T</i>	1		84	27	112	11
27.	<i>P.W.D (Housing)</i>	2	7	98	18	125	8
28.	<i>P.W.D (Mechanical)</i>	2	4	20	45	71	17
29.	<i>PWD (N.H)</i>	4	8	7		19	31
30.	<i>P.W.D (Road &amp; Bridges)</i>	11	6	187	102	306	7
31.	<i>Police</i>	10	7	1595	122	1734	2
32.	<i>Public Health Engineering</i>	4	10	112	313	439	5
33.	<i>Rural Development</i>	6	3	44	19	72	16
34.	<i>School Education</i>	16	42	1531	193	1782	1
35.	<i>Sericulture</i>		1	8	4	13	35
36.	<i>SCERT</i>	14	1	8	13	36	24
37.	<i>Social Security &amp; Welfare</i>		8	55	11	74	15
38.	<i>Soil Conservation</i>	5	1	52	31	89	12
39.	<i>Supply</i>	1		18	29	48	22
40.	<i>Taxes</i>		2	8	7	17	32
41.	<i>Transport</i>		1	10	4	15	33
42.	<i>Treasury &amp; Accounts</i>	1	1	15	4	21	30
43.	<i>Youth Resources &amp; Sports</i>		1	3	5	9	37
44.	<i>Urban Development</i>	1		6	7	14	34
45.	<i>Land Resources</i>	1		4	2	7	38
<b>Total</b>		<b>194</b>	<b>168</b>	<b>5298</b>	<b>1944</b>	<b>7604</b>	

**TABLE-XI (G) DISTRICT: MON**

Sl. No.	Department	Class-I	Class-II	Class-III	Class-IV	Total	Rank
1	2	3	4	5	6	7	8
1.	<i>Agriculture</i>	6	8	72	25	111	8
2.	<i>Animal Husbandry &amp; Veterinary</i>	10		19	48	77	12
3.	<i>Art &amp; Culture</i>		1	5	3	9	34
4.	<i>Co-operation</i>	1		7	4	12	32
5.	<i>Economics &amp; Statistics</i>		1	16	3	20	28
6.	<i>Election</i>	1	1	5	2	9	34
7.	<i>Electricity</i>	3	5	72	74	154	7
8.	<i>Employment &amp; Craftsman Training</i>	1	2	24	7	34	22
9.	<i>Evaluation</i>		1	4	3	8	35
10.	<i>Excise</i>	1	4	29	5	39	21
11.	<i>Fisheries</i>		2	12	11	25	25
12.	<i>Forest</i>	1	6	79	8	94	9
13.	<i>General Administration</i>	17	1	222	144	384	5
14.	<i>Health Services</i>	22	3	189	214	428	3
15.	<i>Higher Education</i>	24		12	16	52	17
16.	<i>Home Guards</i>	1	1	16	4	22	26
17.	<i>Horticulture</i>	1	1	12	11	25	25
18.	<i>Industries</i>	5	2	23	13	43	18
19.	<i>Information &amp; Public Relation</i>		3	43	17	63	14
20.	<i>Irrigation &amp; Flood Control</i>	3	4	37	18	62	15
21.	<i>Jail &amp; Prison</i>		1	21	5	27	24
22.	<i>Judicial</i>	2	1	10	6	19	29
23.	<i>Labour</i>		1	5	5	11	33
24.	<i>Land Records &amp; Survey</i>		1	9	10	20	28
25.	<i>N.S.T</i>	2	2	53	26	83	11
26.	<i>P.W.D (Road &amp; Bridges)</i>	15	15	201	81	312	6

27.	<i>Police</i>	10	9	1504	115	1638	1
28.	<i>Public Health Engineering</i>	3	8	104	303	418	4
29.	<i>Rural Development</i>	11	10	38	28	87	10
30.	<i>School Education</i>	12	16	891	142	1061	2
31.	<i>Sericulture</i>		1	16	15	32	23
32.	<i>Social Security &amp; Welfare</i>		6	43	11	60	16
33.	<i>Soil Conservation</i>	3	2	24	13	42	19
34.	<i>Supply</i>	1		24	15	40	20
35.	<i>Taxes</i>	1	1	6	5	13	31
36.	<i>Transport</i>		1	12	3	16	30
37.	<i>Treasury &amp; Accounts</i>	1	2	39	28	70	13
38.	<i>Weight &amp; Measures</i>	1		4	3	8	35
39.	<i>Youth Resources &amp; Sports</i>		2	10	9	21	27
40.	<i>Urban Development</i>			6	4	11	33
41.	<i>Land Resources</i>		1	3	2	6	36
<b>Total</b>		<b>160</b>	<b>126</b>	<b>3921</b>	<b>1459</b>	<b>5666</b>	

**TABLE-XI (H)**  
**DISTRICT : KIPHIRE**

SI. No.	Department	Class-I	Class-II	Class-III	Class-IV	Total	Rank
1	2	3	4	5	6	7	8
1.	<i>Agriculture</i>	2	2	25	13	42	8
2.	<i>Animal Husbandry &amp; Veterinary</i>	3		14	12	29	11
3.	<i>Election</i>		2	5	3	10	20
4.	<i>Employment</i>			3	2	5	22
5.	<i>General Administration</i>	10	1	147	110	268	3
6.	<i>Health Services</i>	10		89	109	208	4

7.	<i>Higher Education</i>	18	1	4	11	34	10
8.	<i>Horticulture</i>	1	1	6	3	11	19
9.	<i>Industries</i>	1		6	8	15	16
10.	<i>Irrigation &amp; Flood Control</i>	1		12	6	19	14
11.	<i>P.H.E.D</i>	4	8	56	293	361	1
12.	<i>P.W.D (Road &amp; Bridges)</i>	5	5	75	22	107	6
13.	<i>Economics &amp; Statistics</i>		1	11	3	15	16
14.	<i>Police</i>	3		275	17	295	2
15.	<i>Rural Development</i>	5	1	20	12	38	9
16.	<i>School Education</i>	4	2	112	35	153	5
17.	<i>Social Security &amp; Welfare</i>		3	16	4	23	12
18.	<i>Supply</i>	1		9	12	22	13
19.	<i>Treasury &amp; Accounts</i>		1	8	4	13	17
20.	<i>I.P.R</i>			5	6	11	19
21.	<i>Fisheries</i>		1	8	3	12	18
22.	<i>Sericulture</i>	1		8	2	11	19
23.	<i>Electricity</i>	1	2	11	74	88	7
24.	<i>Co-operation</i>		1	3	3	7	21
25.	<i>Land Resource</i>		1	3	1	5	22
26.	<i>Forest</i>	1	1	12	2	16	15
27.	<i>N.S.T</i>		1	23	5	29	11
28.	<i>Soil &amp; Water Conservation</i>		1	13	9	23	12
29.	<i>Judicial</i>	1		4	2	7	21
30.	<i>Labour</i>	1		4	6	11	19
31.	<i>P.W.D (N.H)</i>	4	6	10	2	22	13
<b>Total</b>		<b>77</b>	<b>42</b>	<b>997</b>	<b>794</b>	<b>1910</b>	

**TABLE-XI (I)**  
**DISTRICT : LONGLENG**

Sl. No.	Department	Class-I	Class-II	Class-III	Class-IV	Total	Rank
1	2	3	4	5	6	7	8
1.	<i>Agriculture</i>	1	2	18	7	28	8
2.	<i>Animal Husbandry &amp; Veterinary</i>	2		8	6	16	13
3.	<i>Economics &amp; Statistics</i>		1	11	4	16	13
4.	<i>Election</i>		2	5	3	10	16
5.	<i>General Administration</i>	4	1	119	116	240	2
6.	<i>Health Services</i>	5		67	104	176	4
7.	<i>Higher Education</i>	17	1	5	8	31	7
8.	<i>Horticulture</i>	1	2	6	2	11	15
9.	<i>Industries</i>	1	1	11	15	28	8
10.	<i>Irrigation &amp; Flood Control</i>	1	2	10	12	25	10
11.	<i>P.W.D (Road &amp; Bridges)</i>	3	3	50	10	66	5
12.	<i>Police</i>	3		192	17	212	3
13.	<i>Rural Development</i>	5	1	30	13	49	6
14.	<i>School Education</i>	7	3	850	80	940	1
15.	<i>Sericulture</i>		1	10	16	27	9
16.	<i>Social Security &amp; Welfare</i>		2	12	3	17	12
17.	<i>Soil &amp; Water Conservation</i>	1	2	13	6	22	11
18.	<i>Treasury &amp; Accounts</i>		1	7	5	13	14
19.	<i>I.P.R</i>			4	3	7	17
20.	<i>Labour</i>		1	1		2	19
21.	<i>Land Resource</i>		1	4		5	18
<b>Total</b>		<b>51</b>	<b>27</b>	<b>1433</b>	<b>430</b>	<b>1941</b>	

**TABLE-XI (J)**  
**DISTRICT : PEREN**

Sl. No.	Department	Class-I	Class-II	Class-III	Class-IV	Total	Rank
1	2	3	4	5	6	7	8
1.	<i>Agriculture</i>	3	1	17	9	30	13
2.	<i>Animal Husbandry &amp; Veterinary</i>	4	1	18	24	47	8
3.	<i>Co-operation</i>		1	2	2	5	21
4.	<i>Economics &amp; Statistics</i>		1	12	5	18	15
5.	<i>Election</i>		1	5	3	9	19
6.	<i>Electricity</i>	1	5	32	48	86	7
7.	<i>Employment &amp; Craftsman Training</i>			3	2	5	21
8.	<i>Fisheries</i>		1	11	1	13	17
9.	<i>Forest</i>	3	7	68	8	86	7
10.	<i>General Administration</i>	10	1	113	64	188	4
11.	<i>Health Services</i>	20		150	72	242	3
12.	<i>Higher Education</i>	20	1	4	8	33	11
13.	<i>Horticulture</i>	1	4	6	9	20	14
14.	<i>I.P.R</i>		1	3	2	6	20
15.	<i>Industries</i>	1		8	2	11	18
16.	<i>Irrigation &amp; Flood Control</i>	1		15	4	20	14
17.	<i>Jail &amp; Prison</i>		1	26	4	31	12
18.	<i>P.H.E.D</i>	4	9	31	83	127	6
19.	<i>P.W.D (Road &amp; Bridges)</i>	5	14	102	46	167	5
20.	<i>Police</i>	8	6	926	386	1326	1
21.	<i>Rural Development</i>	5	1	17	11	34	10
22.	<i>School Education</i>	8	6	549	83	646	2
23.	<i>Sericulture</i>	1	1	9	2	13	17



24.	<i>Social Security &amp; Welfare</i>		4	27	6	37	9
25.	<i>Supply</i>	1		11	6	18	15
26.	<i>Treasury &amp; Accounts</i>	1		10	4	15	16
27.	<i>Soil &amp; Water Conservation</i>	2	4	20	8	34	10
28.	<i>Judicial</i>	1		4	4	9	9
29.	<i>Land Resource</i>	1		2		3	22
<b>Total</b>		<b>101</b>	<b>71</b>	<b>2201</b>	<b>906</b>	<b>3279</b>	

**TABLE-XI (K)**  
**DISTRICT : DIMAPUR**

Sl. No.	Department	Class-I	Class-II	Class-III	Class-IV	Total	Rank
1	2	3	4	5	6	7	8
1.	<i>Agriculture</i>	21	24	157	65	267	13
2.	<i>Animal Husbandry &amp; Veterinary</i>	38	2	133	147	320	11
3.	<i>Art and Culture</i>		1	2	4	7	41
4.	<i>Co-operation</i>	2	1	23	9	35	31
5.	<i>Economics &amp; Statistics</i>		1	73	7	81	25
6.	<i>Election</i>	1	1	5	3	10	38
7.	<i>Electricity</i>	17	27	256	305	605	5
8.	<i>Employment &amp; Craftsman Training</i>	2	2	20	14	38	30
9.	<i>Evaluation</i>		1	5	2	8	40
10.	<i>Excise</i>	9	16	132	18	175	16
11.	<i>Fisheries</i>	1		32	11	44	29

12.	Forest	12	24	287	71	394	8
13.	General Administration	21	4	185	86	296	12
14.	Geology & Mining	53	23	178	111	365	9
15.	Health Services	40	2	358	259	659	3
16.	Higher Education	48		21	31	100	22
17.	Home Guards	2	3	83	33	121	18
18.	Horticulture	3	3	32	52	90	24
19.	Industries	19	30	209	98	356	10
20.	Information & Public Relation			9	2	11	37
21.	Irrigation & Flood Control	8	13	124	73	218	15
22.	Jail & Prison		1	47	5	53	27
23.	Judicial	10	2	52	38	102	21
24.	Labour	1	3	18	10	32	32
25.	Land Records & Survey	13	3	78	49	143	17
26.	Legal Metrology (W & M) & Consumer Protection	1		14		15	36
27.	N.S.T	19	12	228	138	397	7
28.	P.W.D (Housing)	11	19	193	174	397	7
29.	<i>P.W.D (Mechanical)</i>		3	60	53	116	19
30.	<i>P.W.D (Road &amp; Bridges)</i>	9	33	314	279	635	4
31.	<i>Police</i>	67	63	5836	485	6451	1
32.	<i>Public Health Engineering</i>	11	28	231	305	575	6
33.	<i>Rural Development</i>	10	5	41	24	80	26
34.	<i>School Education</i>	17	59	1209	477	1762	2
35.	<i>Sericulture</i>	1	1	23	5	30	33
36.	<i>Social Security &amp; Welfare</i>		14	60	30	104	20
37.	<i>Soil Conservation</i>	3	6	31	13	53	27
38.	<i>Supply</i>	6	2	143	76	227	14
39.	<i>Taxes</i>	8	3	44	44	99	23
40.	<i>Transport</i>		1	20	4	25	34
41.	<i>Treasury &amp; Accounts</i>	1	1	37	8	47	28
42.	<i>Youth Resources &amp; Sports</i>			9	16	25	34
43.	<i>Urban Development</i>	1	1	9	6	17	35
44.	<i>Land Resources</i>	1		6	2	9	39
<b>Total</b>		<b>487</b>	<b>438</b>	<b>11027</b>	<b>3642</b>	<b>15594</b>	

**TABLE-XII****DISTRIBUTION OF GOVERNMENT EMPLOYEES BY STATUS AND EDUCATIONAL QUALIFICATION  
AS ON 31<sup>ST</sup> MARCH, 2010**

<i>Educational Qualification</i>	<b>STATUS</b>									
	<i>Class-I</i>		<i>Class-II</i>		<i>Class-III</i>		<i>Class-IV</i>		<i>Total</i>	
	<i>Number</i>	<i>P.C</i>	<i>Number</i>	<i>P.C</i>	<i>Number</i>	<i>P.C</i>	<i>Number</i>	<i>P.C</i>	<i>Number</i>	<i>P.C</i>
<b>1</b>	<b>2</b>	<b>3</b>	<b>4</b>	<b>5</b>	<b>6</b>	<b>7</b>	<b>8</b>	<b>9</b>	<b>10</b>	<b>11</b>
<i>Post Graduate</i>	1230	33.86	241	10.13	890	1.46	6	0.02	2367	2.61
<i>Graduate</i>	1480	40.75	859	36.09	7746	12.73	145	0.61	10230	11.30
<i>P.U/Intermediate</i>	726	19.99	658	27.65	7885	12.96	361	1.53	9630	10.64
<i>Matriculate</i>	163	4.49	487	20.46	14382	23.64	2777	11.74	17809	19.68
<i>Under Matric</i>	33	0.91	135	5.67	29742	48.88	18263	77.18	48173	53.22
<i>Illiterate</i>					198	0.33	2112	8.92	2310	2.55
<b>Total</b>	<b>3632</b>	<b>100</b>	<b>2380</b>	<b>100</b>	<b>60843</b>	<b>100</b>	<b>23664</b>	<b>100</b>	<b>90519</b>	<b>100.00</b>

**TABLE-XIII**

**DISTRIBUTION OF GOVERNMENT EMPLOYEES BY STATUS AND PLAN / NON-PLAN POST  
AS ON 31<sup>ST</sup> MARCH, 2010**

<b>Status</b>	<b>Plan Post</b>		<b>Non-Plan Post</b>		<b>Total</b>	
	<b>Number</b>	<b>P.C</b>	<b>Number</b>	<b>P.C</b>	<b>Number</b>	<b>P.C</b>
<b>1</b>	<b>2</b>	<b>3</b>	<b>4</b>	<b>5</b>	<b>6</b>	<b>7</b>
<b>Class-I</b>	<b>418</b>	<b>11.51</b>	<b>3214</b>	<b>88.49</b>	<b>3632</b>	<b>100.00</b>
<b>Class-II</b>	<b>236</b>	<b>9.92</b>	<b>2144</b>	<b>90.08</b>	<b>2380</b>	<b>100.00</b>
<b>Class-III</b>	<b>4665</b>	<b>7.67</b>	<b>56178</b>	<b>92.33</b>	<b>60843</b>	<b>100.00</b>
<b>Class-IV</b>	<b>2108</b>	<b>8.91</b>	<b>21556</b>	<b>91.09</b>	<b>23664</b>	<b>100.00</b>
<b>Total</b>	<b>7427</b>	<b>8.20</b>	<b>83092</b>	<b>91.80</b>	<b>90519</b>	<b>100.00</b>

**TABLE-XIV**

**DISTRIBUTION OF GOVERNMENT EMPLOYEES ACCORDING TO STATUS AND DISTRICT WISE AS ON  
31<sup>ST</sup> MARCH, 2010**

<b><i>District</i></b>	<b>STATUS</b>					
	<b><i>Class-I</i></b>	<b><i>Class-II</i></b>	<b><i>Class-III</i></b>	<b><i>Class-IV</i></b>	<b><i>Total</i></b>	<b><i>P.C</i></b>
<b><i>Kohima</i></b>	1716	902	15270	5709	23597	26.07
<b><i>Phek</i></b>	186	119	4146	2817	7268	8.03
<b><i>Mokokchung</i></b>	347	250	7868	2806	11271	12.45
<b><i>Wokha</i></b>	155	123	3434	1577	5289	5.84
<b><i>Zunheboto</i></b>	158	114	5248	1580	7100	7.84
<b><i>Tuensang</i></b>	194	168	5298	1944	7604	8.4
<b><i>Mon</i></b>	160	126	3921	1459	5666	6.26
<b><i>Dimapur</i></b>	487	438	11027	3642	15594	17.23
<b><i>Peren</i></b>	101	71	2201	906	3279	3.62
<b><i>Longleng</i></b>	51	27	1433	430	1941	2.14
<b><i>Kiphire</i></b>	77	42	997	794	1910	2.11
<b>Nagaland Total</b>	<b>3632</b>	<b>2380</b>	<b>60843</b>	<b>23664</b>	<b>90519</b>	

## Graph Representation

